

VORTAC FST <b>116.9</b> Chan <b>116</b>	APP CRS <b>116°</b>	Rwy Ldg TDZE Apt Elev <b>7508</b> <b>3002</b> <b>3011</b>
---	------------------------	--

# VOR RWY 12

FORT STOCKTON-PECOS COUNTY (FST)

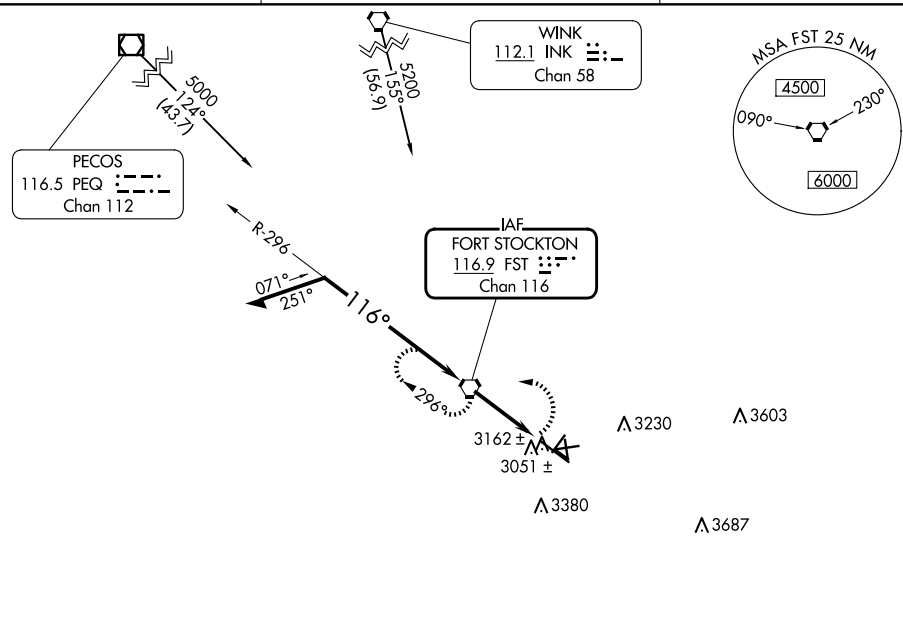
**⚠** Circling NA to Rwys 7-25, 11-29 and 16-34.  
**⚠** Circling Rwy 3, 21, 30 NA at night.

MISSED APPROACH: Climbing left turn to 5000 direct FST VORTAC and hold.

ASOS  
**118.525**

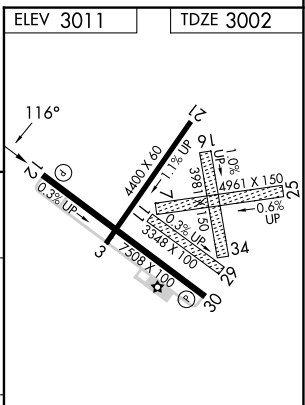
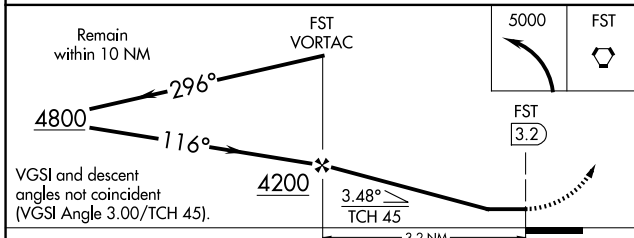
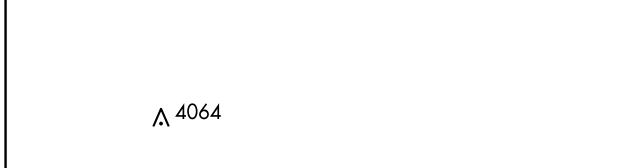
ALBUQUERQUE CENTER  
**135.875 292.15**

UNICOM  
**122.8** (CTAF) **0**



SC-3, 14 MAY 2026 to 11 JUN 2026

SC-3, 14 MAY 2026 to 11 JUN 2026



CATEGORY	A	B	C	D
S-12	3500-1	498 (500-1)	3500-1¼ 498 (500-1¼)	3500-1½ 498 (500-1½)
CIRCLING	3540-1 529 (600-1)	3660-1 649 (700-1)	3740-2 729 (800-2)	3760-2½ 749 (800-2½)

MIRL Rwys 3-21 and 12-30 <b>0</b>					
FAF to MAP 3.2 NM					
Knots	60	90	120	150	180
Min:Sec	3:12	2:08	1:36	1:17	1:04