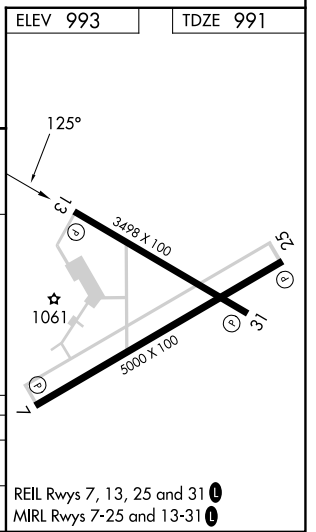
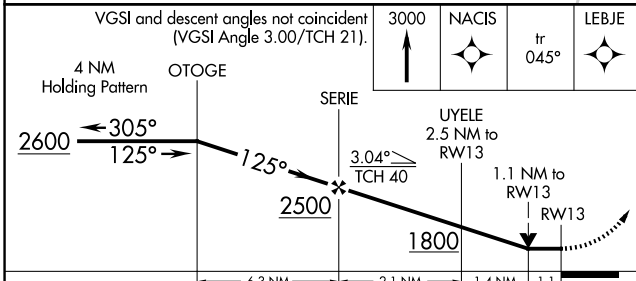
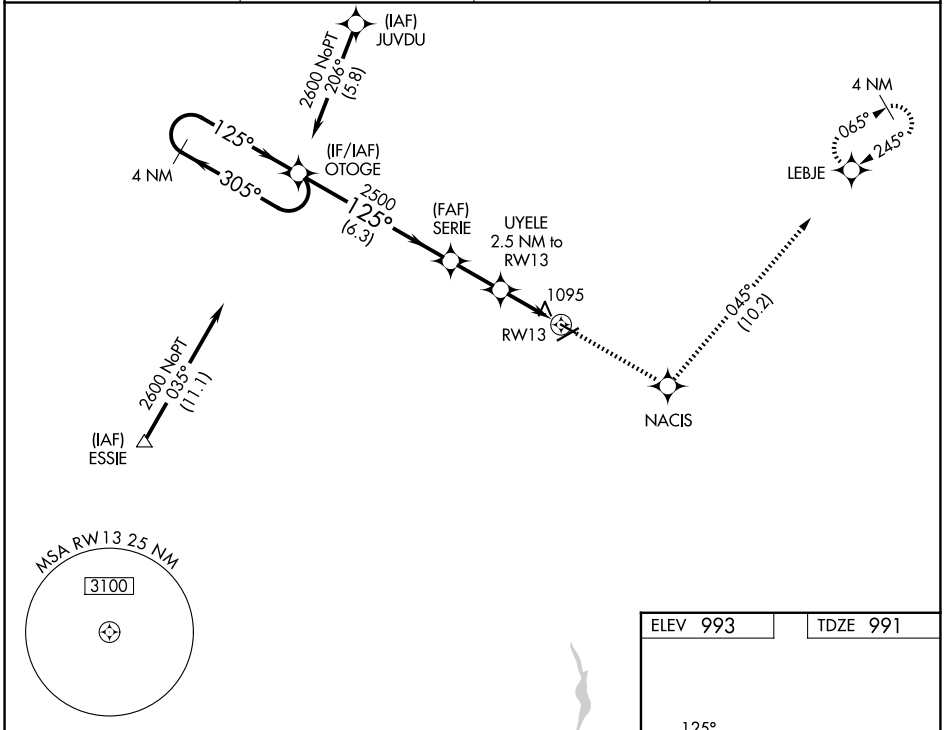


APP CRS	Rwy Ldg	3498
125°	TDZE	991
	Apt Elev	993

RNAV (GPS) RWY 13

MARION MUNI (MNN)

RNP APCH.		MISSED APPROACH: Climb to 3000 direct NACIS and on track 045° to LEBJE and hold.	
<p>▼ Rwy 13 helicopter visibility reduction below 3/4 SM NA. VDP NA when using Ohio State University altimeter setting. When local altimeter setting not received, use Ohio State University altimeter setting: increase all MDAs 100 feet and visibility Cat C/D 3/8 SM.</p>			
ASOS	CLEVELAND APP CON *	CLNC DEL	UNICOM
119.975	128.35 360.65	126.8	122.8 (CTAF) 0



CATEGORY	A	B	C	D
LNVA MDA	1360-1 369 (400-1)		1360-1 1/4 369 (400-1 1/4)	
CIRCLING	1480-1 487 (500-1)	1500-1 507 (600-1)	1700-2 707 (800-2)	1820-2 3/4 827 (900-2 3/4)

EC-2, 14 MAY 2026 to 11 JUN 2026

EC-2, 14 MAY 2026 to 11 JUN 2026