

WAAS CH <b>62904</b> <b>W25A</b>	APP CRS <b>245°</b>	Rwy Ldg TDZE Apt Elev	<b>5000</b> <b>993</b> <b>993</b>
--	------------------------	-----------------------------	---

# RNAV (GPS) RWY 25

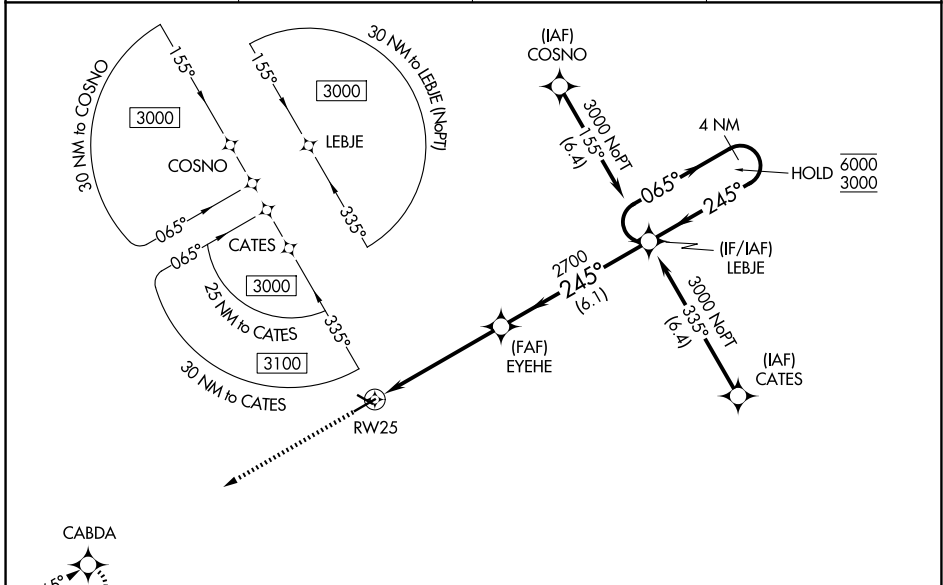
MARION MUNI (MNN)

RNP APCH - GPS.

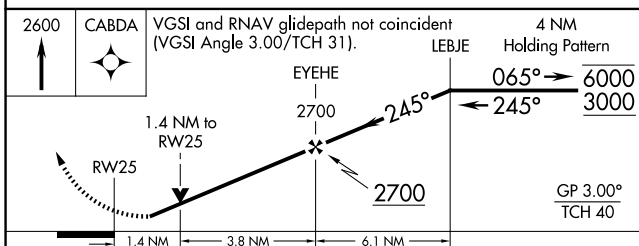
**⚠** Baro-VNAV and VDP NA when using OSU altimeter setting. Rwy 25 helicopter visibility reduction below 3/4 SM NA. For uncompensated Baro-VNAV systems, LNAV/VNAV NA below -16°C or above 54°C. When local altimeter setting not received, use OSU altimeter setting and increase LPV DA to 1381 feet and all visibilities 1/4 SM, increase LNAV/VNAV DA to 1468 feet and all visibilities 1/4 SM; increase all MDAs 100 feet and LNAV visibility Cat C and D 3/4 SM, and Circling visibility Cats C and D 1/4 SM.

MISSED APPROACH:  
Climb to 2600 direct CABDA and hold.

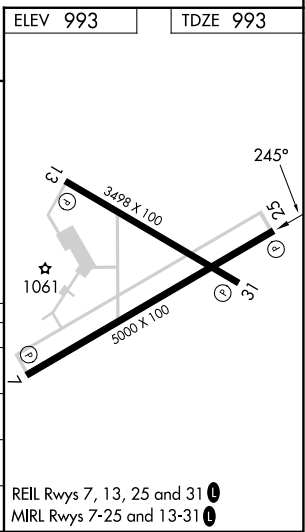
ASOS <b>119.975</b>	CLEVELAND APP CON ★ <b>128.35 360.65</b>	CLNC DEL <b>126.8</b>	UNICOM <b>122.8 (CTAF) 0</b>
------------------------	---	--------------------------	---------------------------------



2600 CABDA  
VGSi and RNAV glidepath not coincident (VGSi Angle 3.00/TCH 31).  
4 NM Holding Pattern  
EYEHE 2700  
LEBJE 6000/3000  
RWY 25 1.4 NM to RWY 25  
2700  
GP 3.00° TCH 40



CATEGORY	A	B	C	D
LPV DA	1294-7/8		301 (400-7/8)	
LNAV/VNAV DA	1381-11/8		388 (400-11/8)	
LNAV MDA	1480-1 487 (500-1)		1480-13/8 487 (500-13/8)	
CIRCLING	1480-1 487 (500-1)		1700-2 827 (800-2) 1820-23/4 827 (900-23/4)	



EC-2, 14 MAY 2026 to 11 JUN 2026

EC-2, 14 MAY 2026 to 11 JUN 2026