

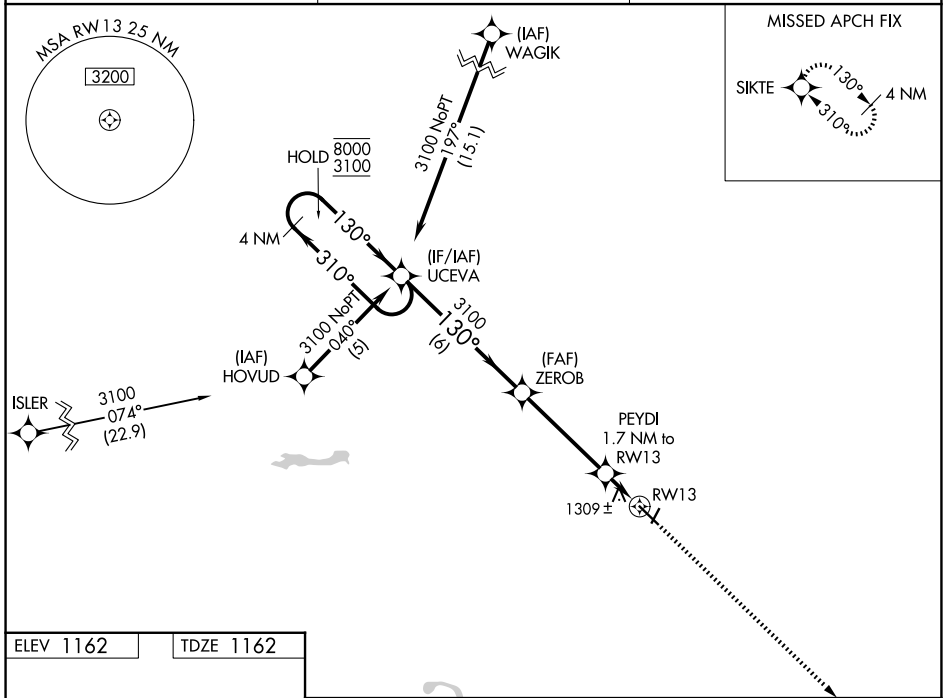
WAAS CH 45812 W13A	APP CRS 130°	Rwy Ldg TDZE 1162 Apt Elev 1162	5505
--	------------------------	---	-------------

RNAV (GPS) RWY 13

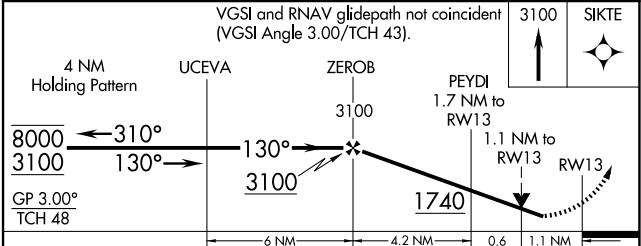
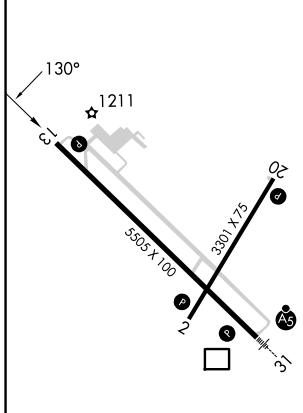
FAIRMONT MUNI (FRM)

RNP APCH-GPS.	MISSED APPROACH: Climb to 3100 direct SIKTE and hold.
<p>▼ For uncompensated Baro-VNAV systems, procedure NA below -17°C or above 54°C. Rwy 13 helicopter visibility reduction below ¼ SM NA.</p>	

AWOS-3PT 120.025	MINNEAPOLIS CENTER 127.75 257.7	UNICOM 122.8 (CTAF) 0
----------------------------	---	---------------------------------



ELEV 1162	TDZE 1162
-----------	-----------



CATEGORY	A	B	C	D
LPV DA	1460-1 298 (300-1)			
LNAV/VNAV DA	1695-2 533 (600-2)			
LNAV MDA	1560-1 398 (400-1)	1560-1½ 398 (400-1½)	1560-1¼ 398 (400-1¼)	1560-1¼ 398 (400-1¼)
CIRCLING	1660-1 498 (500-1)	1980-2½ 818 (900-2½)	1980-2¾ 818 (900-2¾)	1980-2¾ 818 (900-2¾)

HIRL Rwy 13-31
MIRL Rwy 2-20
REIL Rwy 2, 13 and 20

NC-1, 14 MAY 2026 to 11 JUN 2026

NC-1, 14 MAY 2026 to 11 JUN 2026