

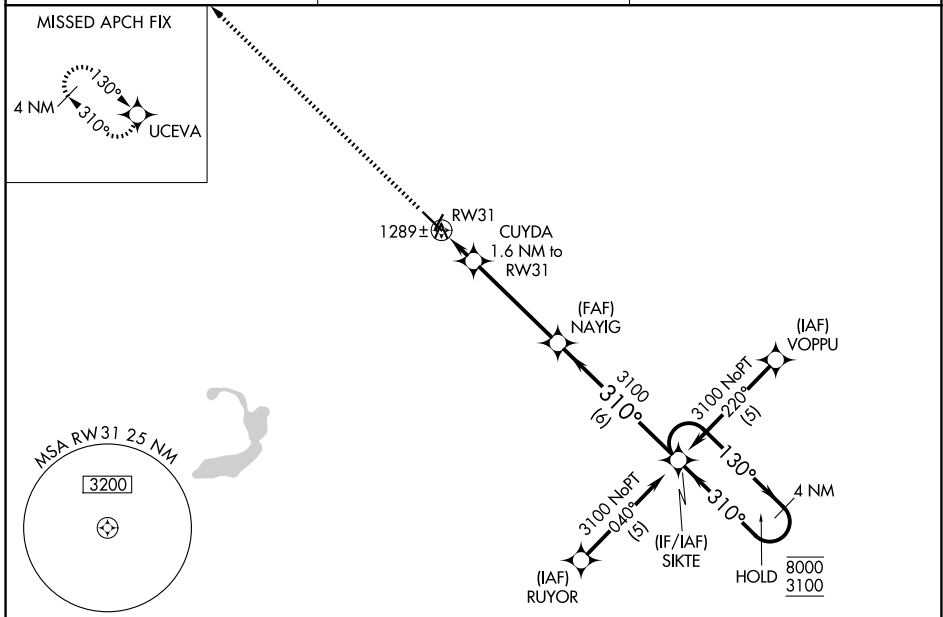
WAAS CH 90412 W31A	APP CRS 310°	Rwy Ldg TDZE 1162 Apt Elev 1162
----------------------------------------	------------------------	-----------------------------------------------------

RNAV (GPS) RWY 31

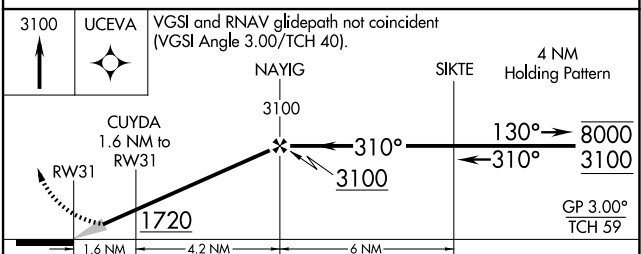
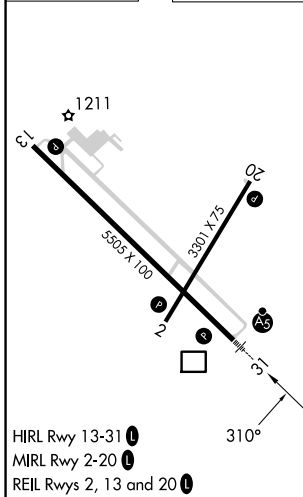
FAIRMONT MUNI (FRM)

RNP APCH-GPS.	MALSR 	MISSED APPROACH: Climb to 3100 direct UCEVA and hold.
<p>⚠ For uncompensated Baro-VNAV systems, procedure NA below -17° C or above 54°C. For inop ALS, increase LPV all Cats visibility to 7/8 SM and LNAV/VNAV all Cats visibility to 1 1/8 SM.</p>		

AWOS-3PT 120.025	MINNEAPOLIS CENTER 127.75 257.7	UNICOM 122.8 (CTAF) ①
----------------------------	-------------------------------------------	---------------------------------



ELEV 1162	TDZE 1162
-----------	-----------



CATEGORY	A	B	C	D
LPV DA	1467-1/2 305 (400-1/2)			
LNAV/VNAV DA	1581-3/4 419 (500-3/4)			
LNAV MDA	1560-1/2 398 (400-1/2)		1560-5/8 398 (400-5/8)	
CIRCLING	1660-1 498 (500-1)		1980-2 1/2 818 (900-2 1/2)	1980-2 3/4 818 (900-2 3/4)

NC-1, 14 MAY 2026 to 11 JUN 2026

NC-1, 14 MAY 2026 to 11 JUN 2026