

LOC I-CKF 108.9	APP CRS 104°	Rwy Ldg 5001
		TDZE 308
		Apt Elev 310

LOC RWY 10
CRISP COUNTY-CORDELE (CKF)

RNP APCH-GPS or RADAR required.

- ▼ Rwy 10 helicopter visibility reduction below 1 SM NA. ADF required.
- ▲ NA Circling Rwy 28 NA at night. When local altimeter setting not received, use Albany altimeter setting and increase all MDA 100 feet and increase S-10 Cat C/D visibility 1/8 SM and Circling Cat C/D visibility 1/4 SM. Inop table does not apply to S-10. Inop table does not apply to S-10 Cat A/B when using Albany altimeter setting. For inop ALS, when using Albany altimeter setting increase S-10 Cat C/D visibility to 1 3/8 SM.

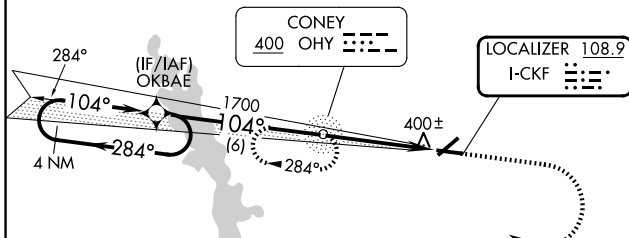


MISSED APPROACH: Climb to 800 then climbing right turn to 2200 direct OHY NDB and hold, continue climb-in-hold to 2200.

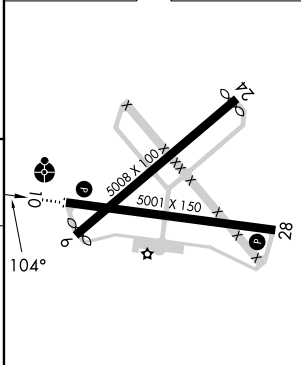
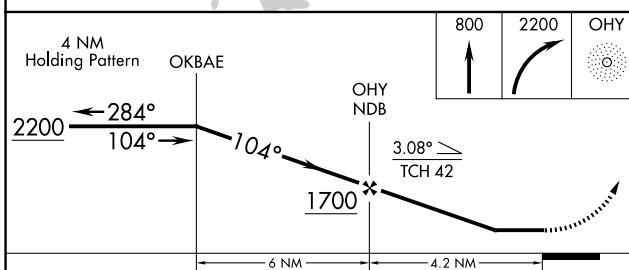
AWOS-3PT
119.325

JACKSONVILLE CENTER
125.75 363.075

UNICOM
123.050 (CTAF) 1



ELEV 310	TDZE 308
----------	----------



CATEGORY	A	B	C	D
S-10		660-1	352 (400-1)	
CIRCLING	820-1	510 (600-1)	1080-2 1/4 770 (800-2 1/4)	1160-2 3/4 850 (900-2 3/4)

MIRL Rwy 10-28 1	
REIL Rwys 10 and 28 1	
FAF to MAP 4.2 NM	
Knots	60 90 120 150 180
Min:Sec	4:12 2:48 2:06 1:41 1:24

SE-4, 14 MAY 2026 to 11 JUN 2026

SE-4, 14 MAY 2026 to 11 JUN 2026