

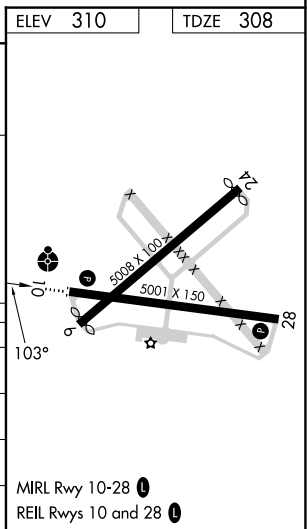
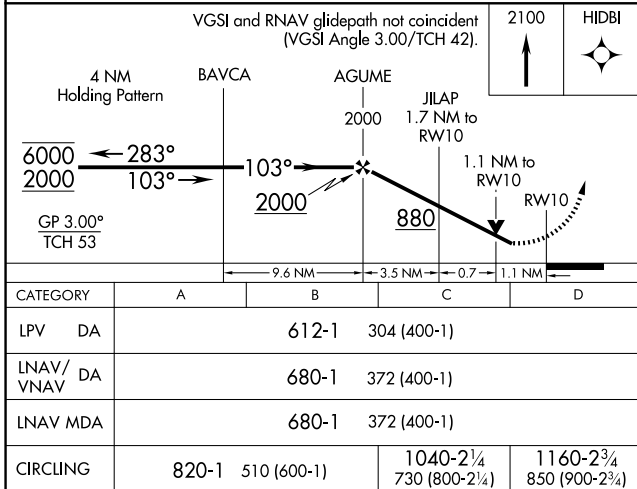
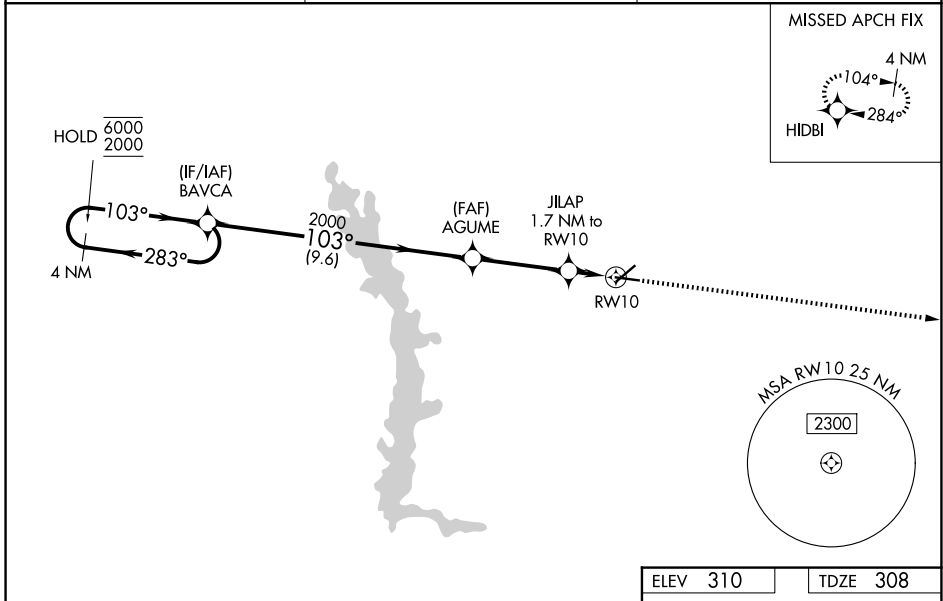
WAAS CH 57905 W10A	APP CRS 103°	Rwy Ldg TDZE 308 Apt Elev 310
--	------------------------	---

RNAV (GPS) RWY 10

CRISP COUNTY-CORDELE (CKF)

RNP APCH - GPS.		ODALS 	MISSED APPROACH: Climb to 2100 direct HIDBI and hold.
Rwy 10 helicopter visibility reduction below 3/4 SM NA. For uncompensated Baro-VNAV systems, LNAV/VNAV NA below -15°C or above 54°C. Inop table does not apply. Circling Rwy 6, 24, 28 NA at night.			

AWOS-3PT 119.325	JACKSONVILLE CENTER 125.75 363.075	UNICOM 123.050 (CTAF)
----------------------------	--	---------------------------------



SE-4, 14 MAY 2026 to 11 JUN 2026

SE-4, 14 MAY 2026 to 11 JUN 2026