

WAAS CH <b>99305</b> <b>W28A</b>	APP CRS <b>284°</b>	Rwy Ldg <b>5001</b> TDZE <b>309</b> Apt Elev <b>310</b>
--	------------------------	---

# RNAV (GPS) RWY 28

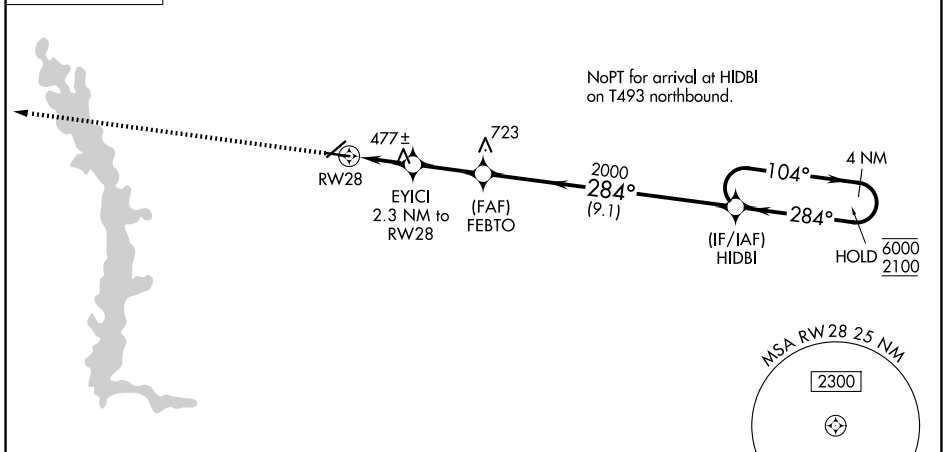
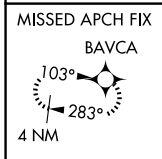
CRISP COUNTY-CORDELE (CKF)

RNP APCH - GPS.

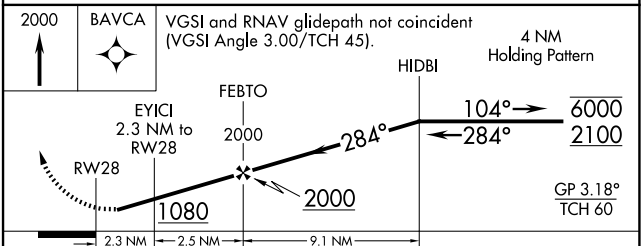
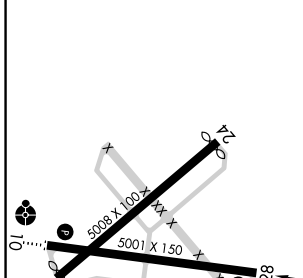
**⚠** Rwy 28 helicopter visibility reduction below 1 SM NA. For uncompensated Baro-VNAV systems, LNAV/VNAV NA below -15°C or above 54°C. Straight-in and Circling Rwy 28 NA at night. Circling Rwy 6 and 24 NA at night.

MISSED APPROACH: Climb to 2000 direct BAVCA and hold.

AWOS-3PT <b>119.325</b>	JACKSONVILLE CENTER <b>125.75 363.075</b>	UNICOM <b>123.050</b> (CTAF) <b>0</b>
----------------------------	--	--



ELEV 310	TDZE 309
----------	----------



	2.3 NM	2.5 NM	9.1 NM	
CATEGORY	A	B	C	D
LPV DA		690-1 <sup>1</sup> / <sub>8</sub>	381 (400-1 <sup>1</sup> / <sub>8</sub> )	
LNAV/VNAV DA		740-1 <sup>1</sup> / <sub>4</sub>	431 (500-1 <sup>1</sup> / <sub>4</sub> )	
LNAV MDA	740-1	431 (500-1)	740-1 <sup>1</sup> / <sub>4</sub>	431 (500-1 <sup>1</sup> / <sub>4</sub> )
CIRCLING	780-1 470 (500-1)	820-1 510 (600-1)	1040-2 730 (800-2)	1160-2 <sup>3</sup> / <sub>4</sub> 850 (900-2 <sup>3</sup> / <sub>4</sub> )

MIRL Rwy 10-28 **0**  
REIL Rwy 10 and 28 **0**

SE-4, 14 MAY 2026 to 11 JUN 2026

SE-4, 14 MAY 2026 to 11 JUN 2026