

WAAS CH <b>40106</b> <b>W06A</b>	APP CRS <b>056°</b>	Rwy Ldg <b>4882</b> TDZE <b>309</b> Apt Elev <b>310</b>
--	------------------------	---

# RNAV (GPS) RWY 6

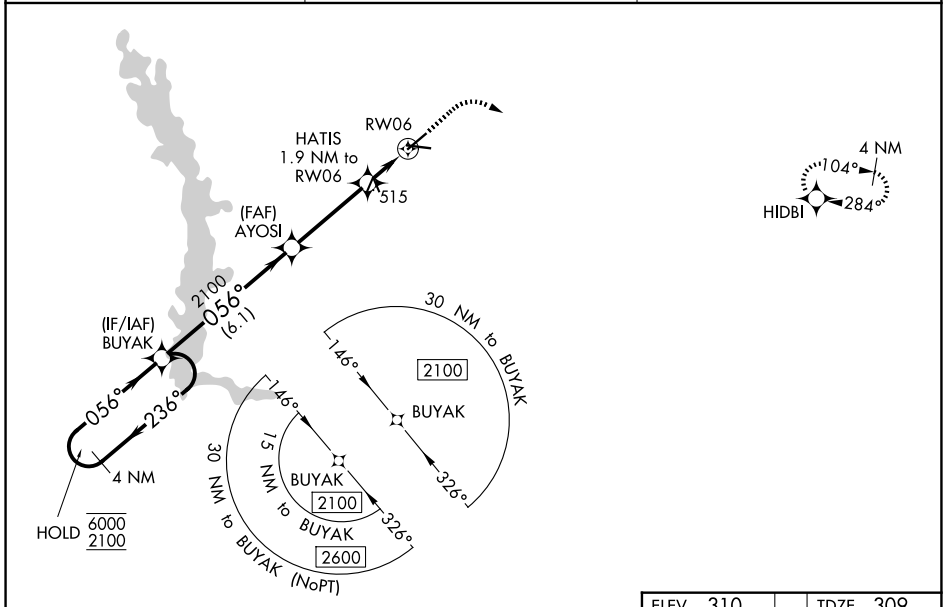
CRISP COUNTY-CORDELE (CKF)

RNP APCH - GPS.

▼  
▲ Rwy 6 helicopter visibility reduction below 1 SM NA. For uncompensated Baro-VNAV systems, LNAV/VNAV NA below -15°C or above 54°C. Straight-in Rwy 6 NA at night, Circling Rwy 6, 24, 28 NA at night.

MISSED APPROACH: Climb to 800 then climbing right turn to 2100 direct HIDBI and hold.

AWOS-3PT <b>119.325</b>	JACKSONVILLE CENTER <b>125.75 363.075</b>	UNICOM <b>123.050 (CTAF) 0</b>
----------------------------	--	-----------------------------------



SE-4, 14 MAY 2026 to 11 JUN 2026

SE-4, 14 MAY 2026 to 11 JUN 2026

4 NM Holding Pattern		BUYAK		AYOSI		HATIS		RWY 6	
6000 2100		← 236°		→ 056°		2100		960	
GP 3.00°		TCH 50		6.1 NM		3.6 NM		1.9 NM	
CATEGORY	A	B	C	D					
LPV DA	578-1		269 (300-1)						
LNAV/VNAV DA	723-1½		414 (500-1½)						
LNAV MDA	780-1	471 (500-1)	780-1¾	471 (500-1½)					
CIRCLING	780-1 470 (500-1)	820-1 510 (600-1)	1040-2 730 (800-2)	1160-2¾ 850 (900-2¾)					

