

APP CRS 180°	Rwy Ldg TDZE Apt Elev	N/A N/A 329
------------------------	-----------------------------	--

RNAV (GPS)-A
BRUNSWICK COUNTY (LVL)

RNP APCH.

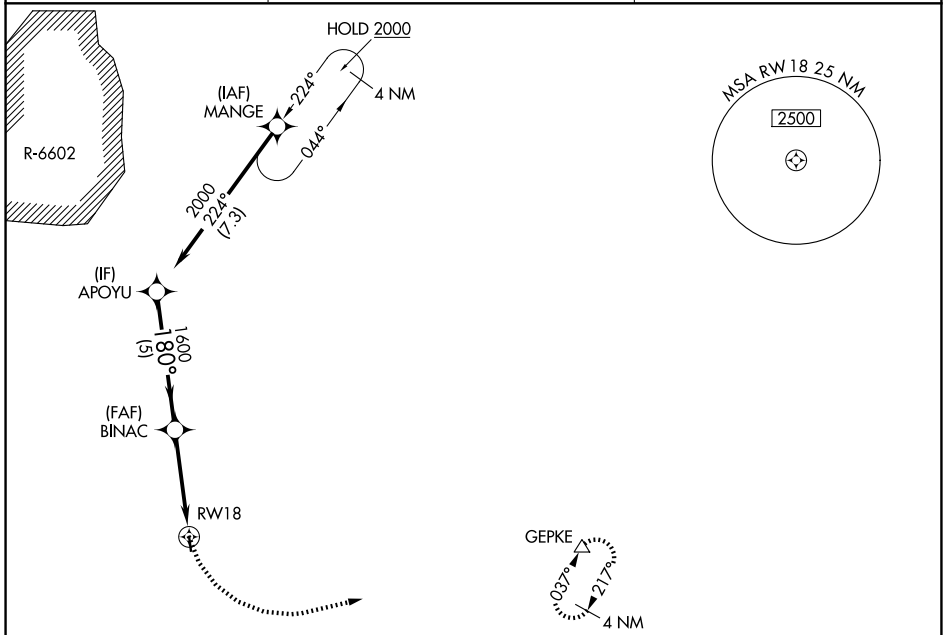
▼ Procedure NA at night. Helicopter visibility reduction below 1 SM NA. When local altimeter setting not received, use South Hill altimeter setting and increase all MDA 60 feet.
▲

MISSED APPROACH: Climbing left turn to 4000 direct GEPKE and hold, continue climb-in-hold to 4000.

AWOS-3
119.625

WASHINGTON CENTER
118.75 377.1

UNICOM
122.8 (CTAF)



NE-3, 14 MAY 2026 to 11 JUN 2026

NE-3, 14 MAY 2026 to 11 JUN 2026

	ELEV 329			
	Visual Segment - Obstacles.		4000	GEPKE
APOYU	BINAC			
2000	1600			
180°				
5 NM		3.9 NM		
CATEGORY	A	B	C	D
CIRCLING	1340-3	1011 (1100-3)	NA	