


LOC/DME I-HDR <b>111.5</b> Chan <b>52</b>	APP CRS <b>316°</b>	Rwy Ldg <b>4798</b> TDZE <b>922</b> Apt Elev <b>934</b>
---	------------------------	---

# ILS or LOC RWY 31

BARROW COUNTY (WDR)

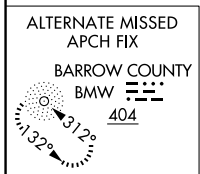
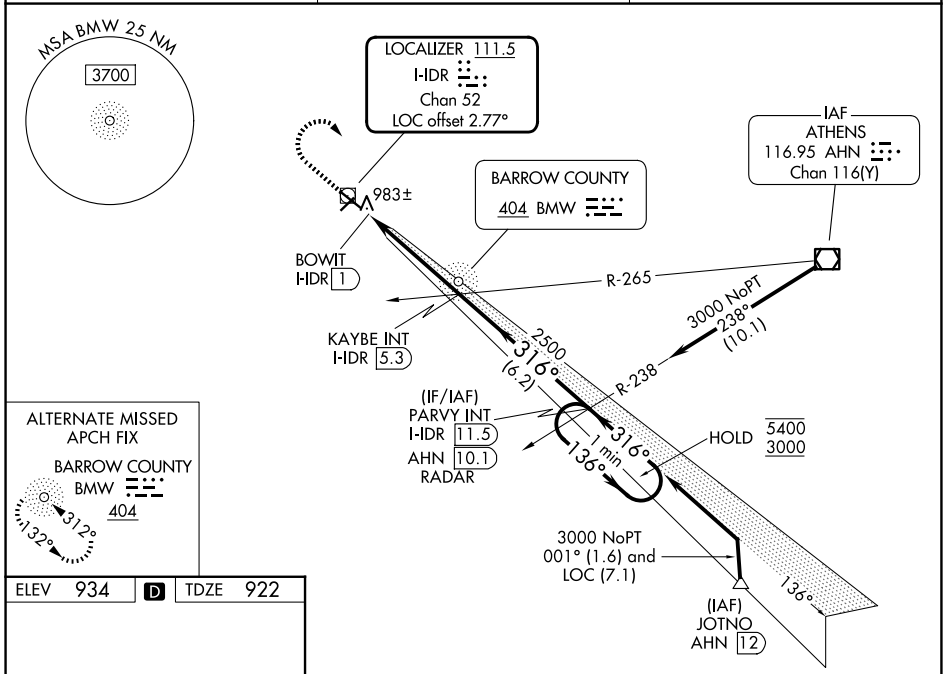
DME or RADAR required for procedure entry.

**⚠** Rwy 31 helicopter visibility reduction below  $\frac{3}{4}$  SM NA. Inop table does not apply to S-ILS 31. For inop ALS, increase S-LOC 31 all Cats visibility to 1 SM. Circling Rwy 13, 23 NA at night.

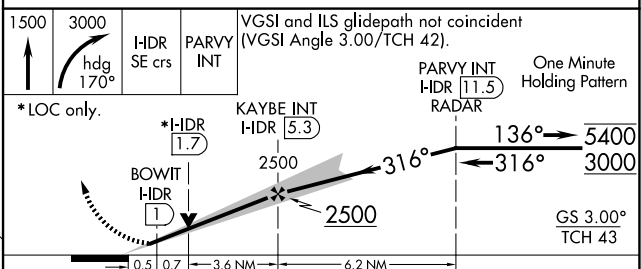
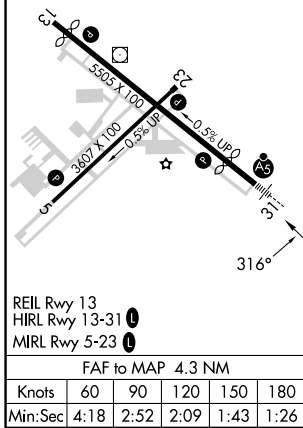
**MALS**  


**MISSED APPROACH:** Climb to 1500 then climbing right turn to 3000 via heading 170° and HDR SE course to PARVY INT/I-HDR 11.5 DME/RADAR and hold.

AWOS-3 <b>118.575</b>	ATLANTA APP CON * <b>132.475 291.1</b>	UNICOM <b>123.0 (CTAF) 0</b>
--------------------------	---	---------------------------------



ELEV <b>934</b>	<b>D</b>	TDZE <b>922</b>
-----------------	----------	-----------------



CATEGORY	A	B	C	D
S-ILS 31		1172- $\frac{3}{4}$	250 (300- $\frac{3}{4}$ )	
S-LOC 31		1300- $\frac{3}{4}$	378 (400- $\frac{3}{4}$ )	
CIRCLING	1400-1 466 (500-1)	1580-1 646 (700-1)	1660-2 726 (800-2)	1660-2 $\frac{1}{4}$ 726 (800-2 $\frac{1}{4}$ )

SE-4, 14 MAY 2026 to 11 JUN 2026

SE-4, 14 MAY 2026 to 11 JUN 2026