

WINDER, GEORGIA

AL-5360 (FAA)

26078

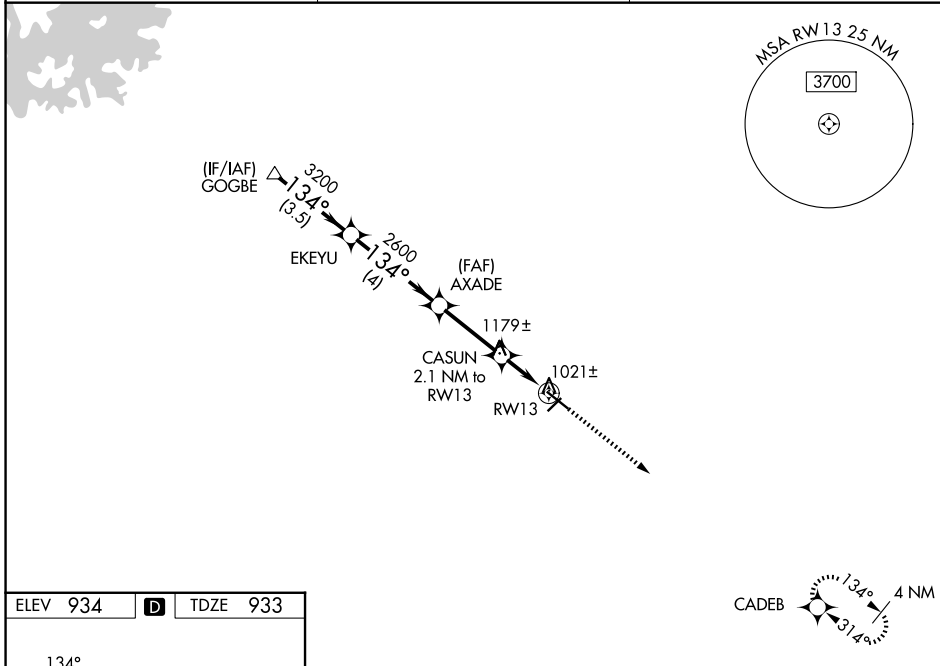
WAAS CH <b>90305</b> <b>W13A</b>	APP CRS <b>134°</b>	Rwy Ldg TDZE Apt Elev	<b>5105</b> <b>933</b> <b>934</b>
--	------------------------	-----------------------------	---

# RNAV (GPS) RWY 13

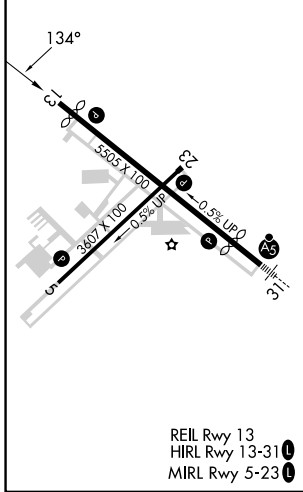
BARROW COUNTY (WDR)

RNP APCH.	MISSED APPROACH: Climb to 3000 direct CADEB and hold.
-----------	---

AWOS-3 <b>118.575</b>	ATLANTA APP CON * <b>132.475 291.1</b>	UNICOM <b>123.0 (CTAF) 0</b>
--------------------------	---	---------------------------------



ELEV 934	<b>D</b>	TDZE 933
----------	----------	----------



VGSi and RNAV glidepath not coincident (VGSi Angle 3.00/TCH 35).				3000	CADEB
GP 3.00° TCH 60				↑	✧
*LNAV only.					
CATEGORY	A	B	C	D	
LPV DA	1207-1		274 (300-1)		
LNAV/VNAV DA	1422-1 $\frac{3}{8}$		489 (500-1 $\frac{3}{8}$ )		
LNAV MDA	1300-1		367 (400-1)		
CIRCLING	1400-1 466 (500-1)	1580-1 646 (700-1)	1660-2 726 (800-2)	1660-2 $\frac{1}{4}$ 726 (800-2 $\frac{1}{4}$ )	

WINDER, GEORGIA  
Amdt 1C 20MAY21

33°59'N-83°40'W

# BARROW COUNTY (WDR) RNAV (GPS) RWY 13

SE-4, 14 MAY 2026 to 11 JUN 2026

SE-4, 14 MAY 2026 to 11 JUN 2026