

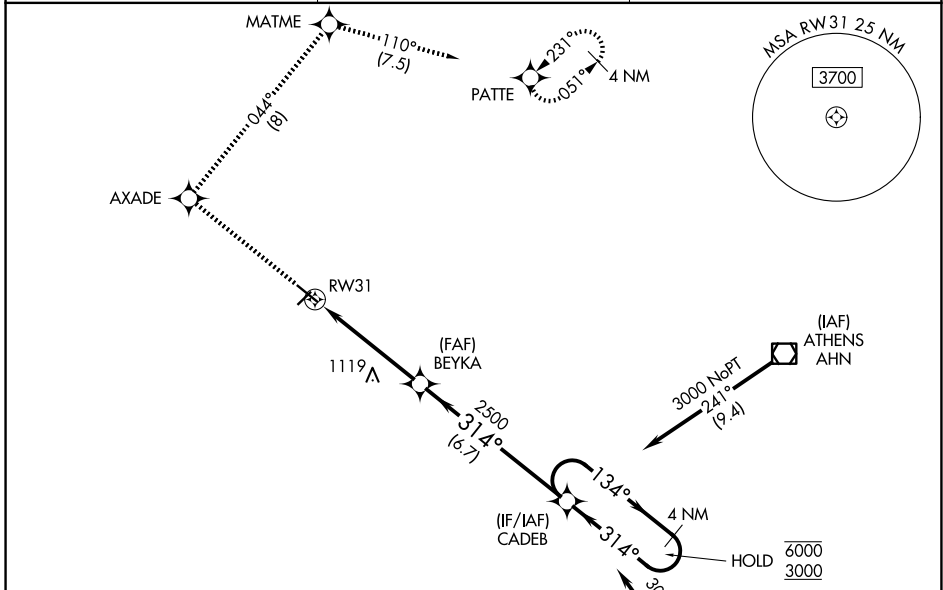
WAAS CH 69305 W31A	APP CRS 314°	Rwy Ldg TDZE 922 Apt Elev 934	4798
--	------------------------	---	-------------

RNAV (GPS) RWY 31

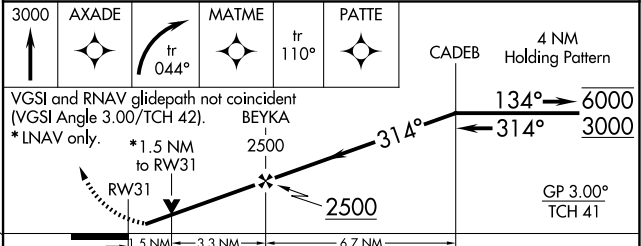
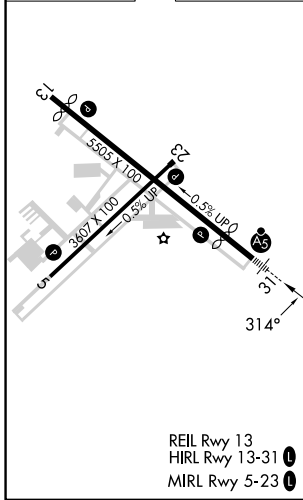
BARROW COUNTY (WDR)

RNP APCH.	MALSR	MISSED APPROACH: Climb to 3000 direct AXADE and right turn on track 044° to MATME and on track 110° to PATTE and hold.
<p>⚠ For uncompensated Baro-VNAV systems, LNAV/VNAV NA below -16°C or above 54°C. Circling Rwy 13, 23 NA at night. Rwy 31 helicopter visibility reduction below ¾ SM NA. For inop ALS, increase LNAV/VNAV all Cats visibility to 1 SM, LNAV Cat A/B visibility to 1 SM, Cat C/D to 1 ½ SM. Inop table does not apply to LPV all Cats.</p>		

AWOS-3 118.575	ATLANTA APP CON ★ 132.475 291.1	UNICOM 123.0 (CTAF)
--------------------------	---	-------------------------------



ELEV 934	D	TDZE 922
----------	----------	----------



CATEGORY	A	B	C	D
LPV DA		1172-¾	250 (300-¾)	
LNAV/VNAV DA		1274-¾	352 (400-¾)	
LNAV MDA	1420-¾	498 (500-¾)	1420-1	498 (500-1)
CIRCLING	1420-1 486 (500-1)	1580-1 646 (700-1)	1660-2 726 (800-2)	1660-2½ 726 (800-2½)

SE-4, 14 MAY 2026 to 11 JUN 2026

SE-4, 14 MAY 2026 to 11 JUN 2026