

(BEAVY7.BEAVY) 26134

AL-5361 (FAA)

ROCK HILL/YORK COUNTY/BRYANT FLD (UZA)
ROCK HILL, SOUTH CAROLINA

BEAVY SEVEN DEPARTURE (RNAV)

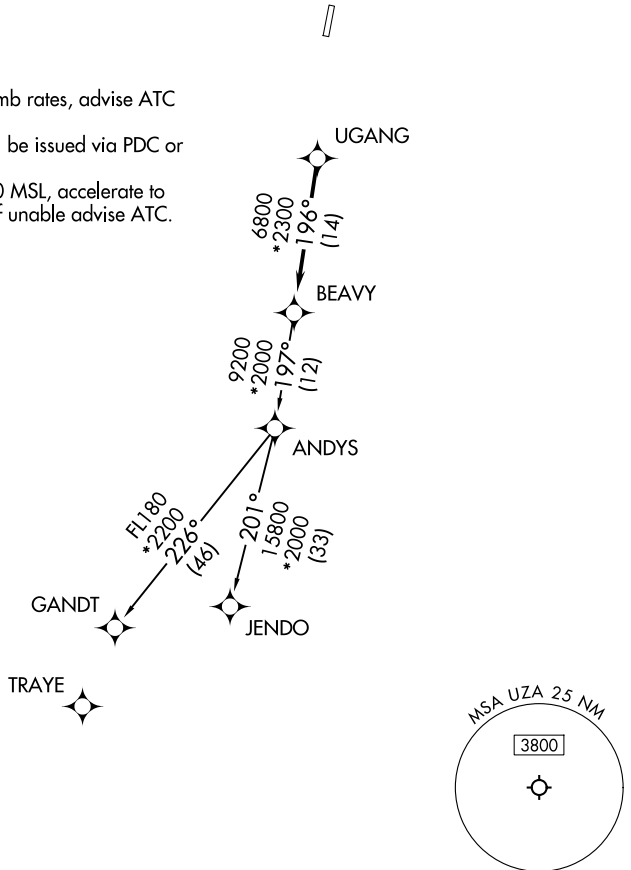
CHARLOTTE DEP CON
120.05 307.8
ASOS
120.775

RNAV 1 - DME/DME/IRU or GPS.
RADAR required.

**TOP ALTITUDE:
3000**

TAKEOFF MINIMUMS
Rwys 2, 20: Standard.

- NOTE: Turbojet only.
- NOTE: If unable to accept climb rates, advise ATC on initial contact.
- NOTE: Transponder code will be issued via PDC or Charlotte CLNC DEL.
- NOTE: Upon reaching 10000 MSL, accelerate to and maintain 280K, if unable advise ATC.



NOTE: Chart not to scale.



DEPARTURE ROUTE DESCRIPTION

Climb on heading assigned by ATC, for RADAR vectors to UGANG, then on depicted route to BEAVY. Then on assigned transition, maintain 3000, expect filed altitude 10 minutes after departure.

GANDT TRANSITION (BEAVY7.GANDT)
JENDO TRANSITION (BEAVY7.JENDO)

BEAVY SEVEN DEPARTURE (RNAV)

ROCK HILL, SOUTH CAROLINA
ROCK HILL/YORK COUNTY/BRYANT FLD (UZA)

(BEAVY7.BEAVY) 14MAY26

SE-2, 14 MAY 2026 to 11 JUN 2026

SE-2, 14 MAY 2026 to 11 JUN 2026