

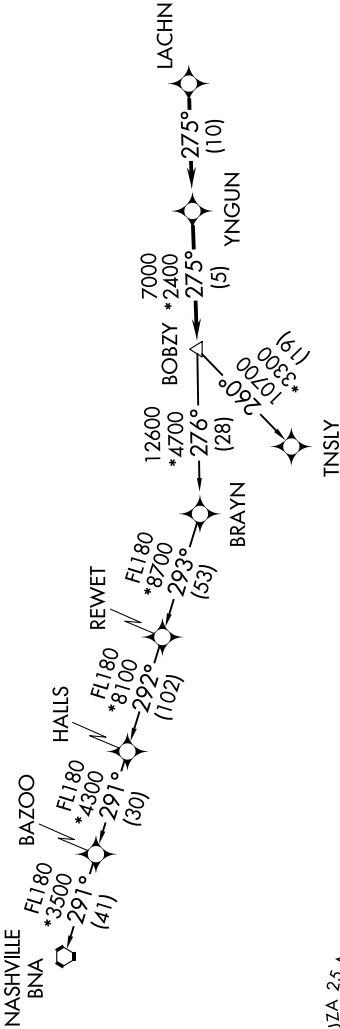
BOBZY SIX DEPARTURE (RNAV)

SE-2, 14 MAY 2026 to 11 JUN 2026

CHARLOTTE DEP CON
120.05 307.8
ASOS
120.775

RNAV 1 - DME/DME/IRU or GPS.
RADAR required.

TOP ALTITUDE:
3000



TAKEOFF MINIMUMS
Rwys 2, 20: Standard.

- NOTE: Turbojet only.
- NOTE: If unable to accept climb rates, advise ATC on initial contact.
- NOTE: Transponder code will be issued via PDC or Charlotte CLNC DEL.
- NOTE: Upon reaching 10000 MSL, accelerate to and maintain 280K, if unable advise ATC.

DEPARTURE ROUTE DESCRIPTION

Climb on heading assigned by ATC, for RADAR vectors to LACHN, then on depicted route to BOBZY, then on assigned transition. Maintain 3000. Expect filed altitude 10 minutes after departure.

NASHVILLE TRANSITION (BOBZY6.BNA)
TNSLY TRANSITION (BOBZY6.TNSLY)

NOTE: Chart not to scale.

BOBZY SIX DEPARTURE (RNAV)

SE-2, 14 MAY 2026 to 11 JUN 2026