

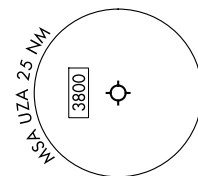
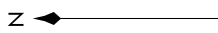
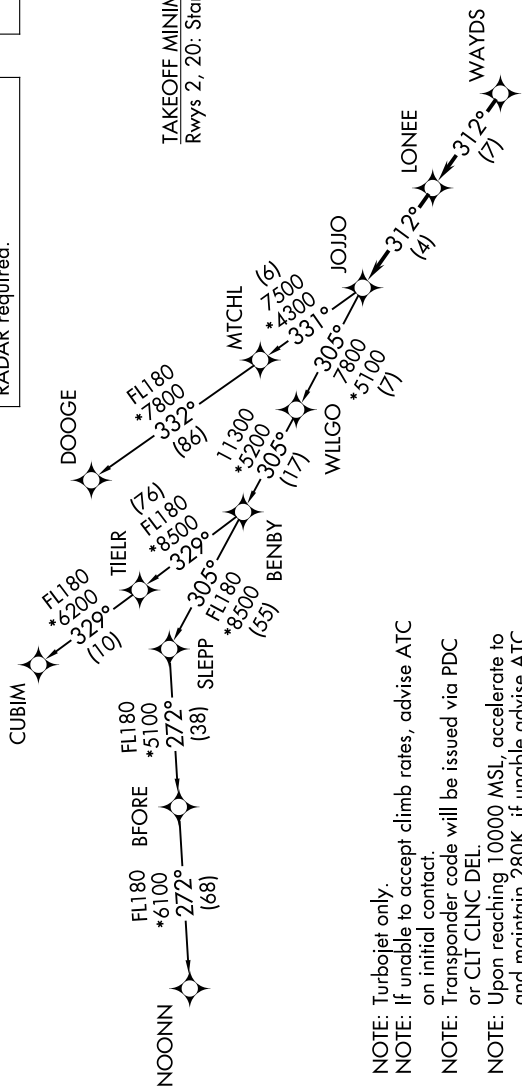
SE-2, 14 MAY 2026 to 11 JUN 2026

CHARLOTTE DEP CON  
120.05 307.8  
ASOS  
120.775

RNAV 1 - DME/DME/IRU or GPS.  
RADAR required.

TOP ALTITUDE:  
3000

TAKEOFF MINIMUMS  
Rwys 2, 20: Standard.



NOTE: Chart not to scale.

- NOTE: Turbojet only.
- NOTE: If unable to accept climb rates, advise ATC on initial contact.
- NOTE: Transponder code will be issued via PDC or CLT CLNC DEL.
- NOTE: Upon reaching 10000 MSL, accelerate to and maintain 280K, if unable advise ATC.

DEPARTURE ROUTE DESCRIPTION

Climb on heading assigned by ATC for RADAR vectors to WAYDS, then on depicted route to JOJJO. Then on assigned transition. Maintain 3000, expect filed altitude 10 minutes after departure.

- CUBIM TRANSITION (JOJO6.CUBIM)
- DOOGE TRANSITION (JOJO6.DOOGE)
- NOONN TRANSITION (JOJO6.NOONN)

SE-2, 14 MAY 2026 to 11 JUN 2026