

KILNS SIX DEPARTURE (RNAV)

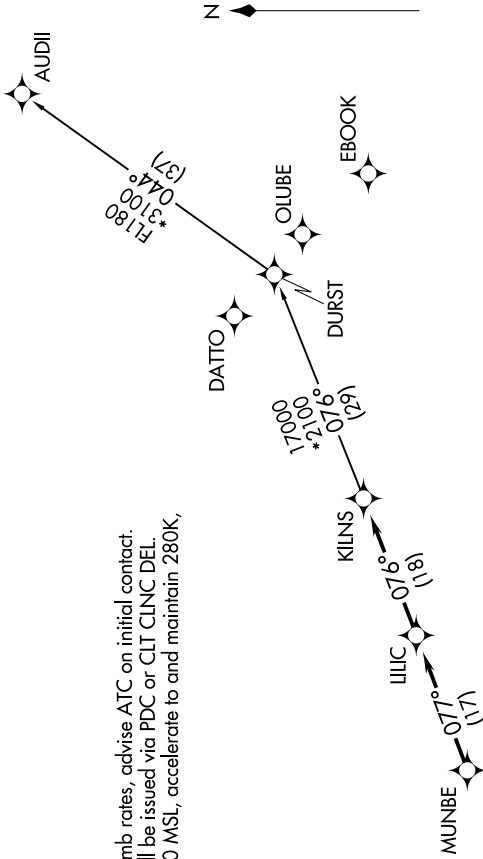
SE-2, 14 MAY 2026 to 11 JUN 2026

CHARLOTTE DEP CON
120.05 307.8
ASOS
120.775

RNAV 1 - DME/DME/IRU or GPS.
RADAR required.

TOP ALTITUDE:
3000

- NOTE: Turbojet only.
- NOTE: If unable to accept climb rates, advise ATC on initial contact.
- NOTE: Transponder code will be issued via PDC or CLT CLNC DEL.
- NOTE: Upon reaching 10000 MSL, accelerate to and maintain 280K, if unable advise ATC.

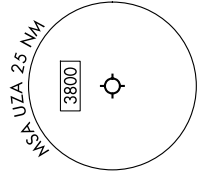


TAKEOFF MINIMUMS
Rwys 2, 20: Standard.

DEPARTURE ROUTE DESCRIPTION

Climb on heading assigned by ATC for RADAR vectors to MUNBE, then on depicted route to KILNS, then on AUDII Transition. Maintain 3000, expect filed altitude 10 minutes after departure.

AUDII TRANSITION (KILNS6.AUDII)



NOTE: Chart not to scale.

SE-2, 14 MAY 2026 to 11 JUN 2026

KILNS SIX DEPARTURE (RNAV)