


WAAS CH <b>70425</b> <b>W02A</b>	APP CRS <b>016°</b>	Rwy Ldg <b>5500</b> TDZE <b>666</b> Apt Elev <b>666</b>
----------------------------------------	------------------------	---------------------------------------------------------------

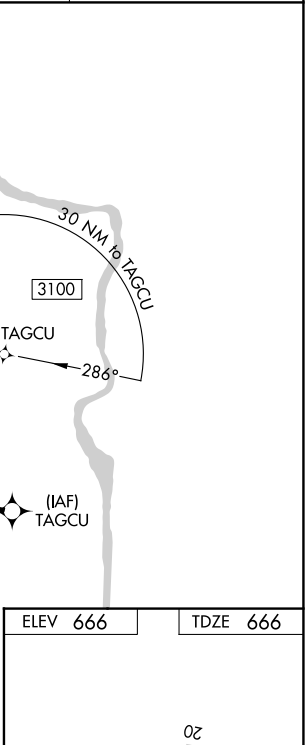
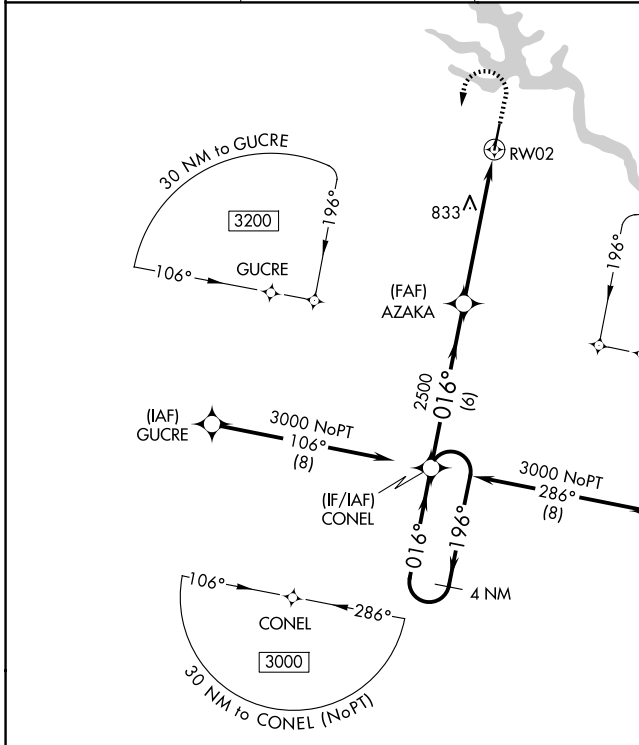
# RNAV (GPS) RWY 2

ROCK HILL/YORK COUNTY/BRYANT FLD (UZA)

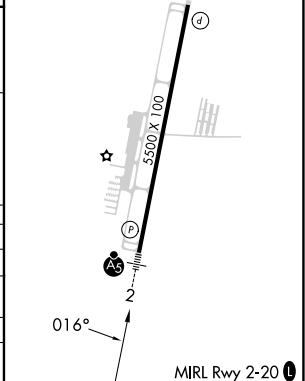
**⚠** Baro-VNAV and VDP NA when using Charlotte/Douglas Intl altimeter setting. For uncompensated Baro-VNAV systems, LNAV/VNAV NA below -9°C (16°F) or above 54°C (130°F). DME/DME RNP-0.3 NA. When local altimeter setting not received, use Charlotte/Douglas Intl altimeter setting and increase all DA 45 feet and all MDA 60 feet. Increase LNAV/VNAV all Cats visibility 1/8 mile and LNAV Cat C/D visibility 1/4 mile.

**MALSR**  
  
**MISSED APPROACH:**  
 Climb to 1600 then climbing left turn to 3000 direct CONEL and hold.

ASOS <b>120.775</b>	CHARLOTTE APP CON <b>120.05 307.8</b>	GCO <b>121.725</b>	UNICOM <b>123.05</b> (CTAF) <b>📻</b>
------------------------	------------------------------------------	-----------------------	-----------------------------------------



4 NM Holding Pattern	CONEL		1600	3000	CONEL
	← 196°	→ 016°	↑	↻	✧
GP 3.00° TCH 41	2500	2500	* 1.2 NM to RWY 2		* LNAV only.
	6 NM	4.4 NM	1.2 NM		
CATEGORY	A	B	C	D	
LPV DA		866-1/2	200 (200-1/2)		
LNAV/VNAV DA		1022-3/4	356 (400-3/4)		
LNAV MDA	1100-1/2	434 (500-1/2)	1100-3/4	434 (500-3/4)	
CIRCLING	1140-1 474 (500-1)	1160-1 494 (500-1)	1340-2 674 (700-2)	1340-2 1/4 674 (700-2 1/4)	



# RNAV (GPS) RWY 2

SE-2, 14 MAY 2026 to 11 JUN 2026

SE-2, 14 MAY 2026 to 11 JUN 2026