

WAAS CH 90230 W19A	APP CRS 186°	Rwy Ldg TDZE Apt Elev	5201 915 925
----------------------------------------	------------------------	-----------------------------	-----------------------------------------

RNAV (GPS) RWY 19

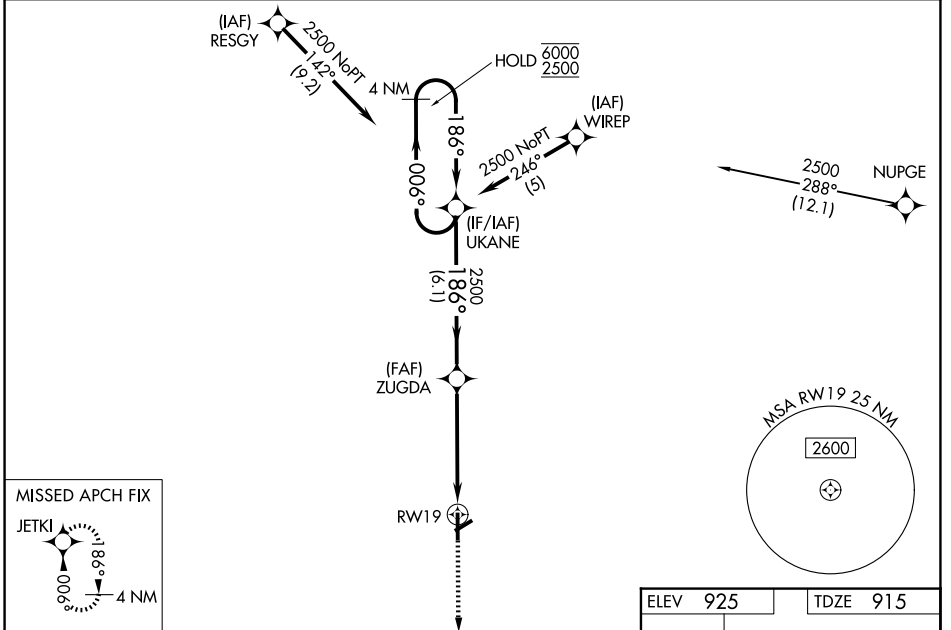
KIRSCH MUNI (IRS)

RNP APCH - GPS.

▼ Rwy 19 helicopter visibility reduction below ¾ SM NA. For uncompensated Baro-VNAV systems, LNAV/VNAV NA below -16°C or above 54°C. Baro-VNAV and VDP NA when using HAI altimeter setting. Circling Rwy 6 NA at night. When local altimeter setting not received, use HAI altimeter setting and increase LPV DA to 1276 feet; increase LNAV/VNAV DA to 1441 feet and all visibilities ½ SM. Increase all MDAs 60 feet and LNAV visibility Cat C/D ¼ SM, and Circling visibility Cat C/D ¼ SM.

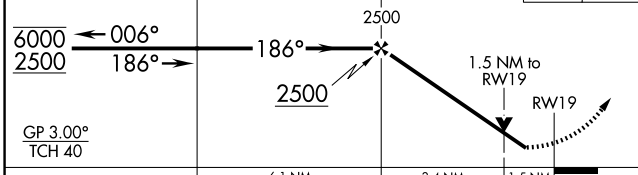
MISSED APPROACH: Climb to 3000 direct JETKI and hold.

AWOS-3P 121.325	GREAT LAKES APP CON ★ 121.2 239.25	UNICOM 123.05 (CTAF) 0
---------------------------	----------------------------------------------	----------------------------------

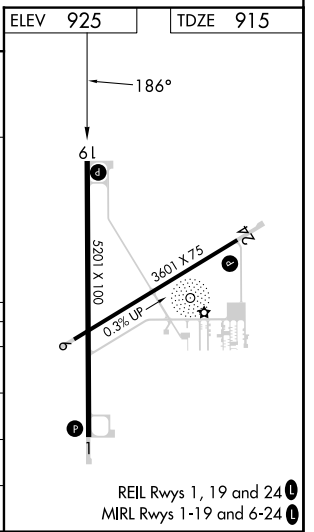


4 NM Holding Pattern UKANE ZUGDA 3000 JETKI

VGSI and RNAV glidepath not coincident (VGSI Angle 3.00/TCH 27).



CATEGORY	A	B	C	D
LPV DA		1235-1	320 (400-1)	
LNAV/VNAV DA		1229-1	314 (400-1)	
LNAV MDA	1400-1	485 (500-1)	1400-1¾	485 (500-1¾)
CIRCLING	1440-1	515 (600-1)	1620-2 695 (700-2)	1620-2¼ 695 (700-2¼)



EC-1, 14 MAY 2026 to 11 JUN 2026

EC-1, 14 MAY 2026 to 11 JUN 2026