

WAAS CH <b>78032</b> <b>W18A</b>	APP CRS <b>181°</b>	Rwy ldg <b>4098</b> TDZE <b>573</b> Apt Elev <b>573</b>
--	------------------------	---

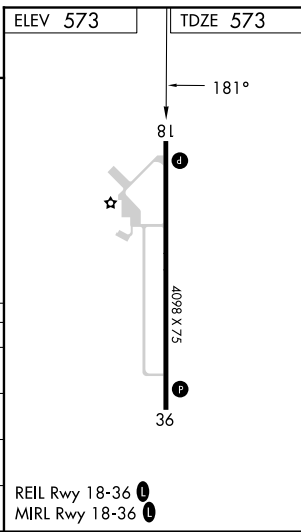
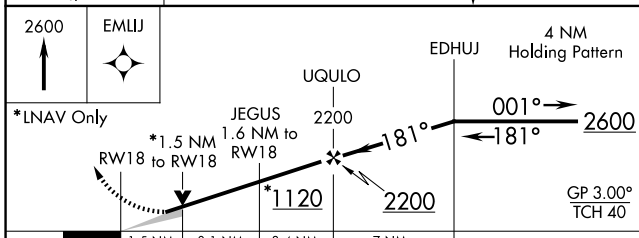
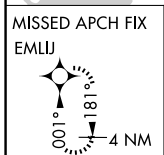
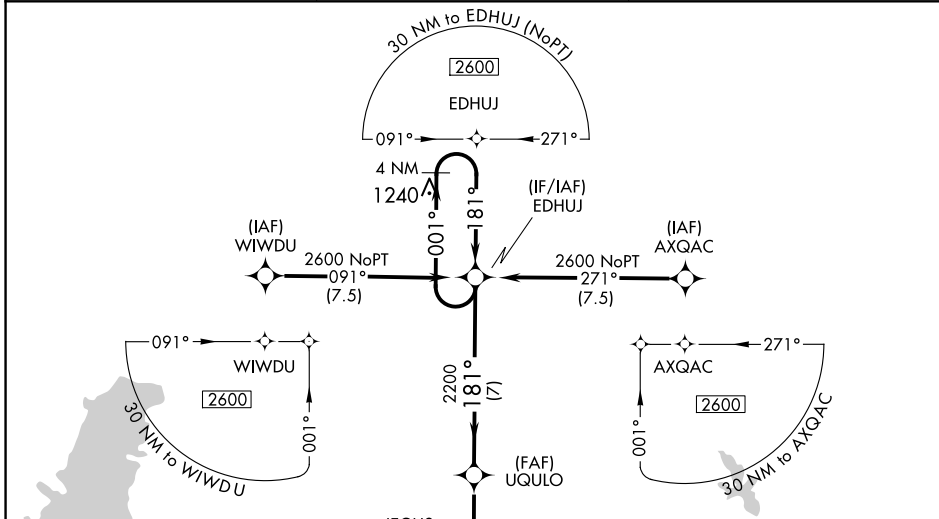
# RNAV (GPS) RWY 18

SALEM-LECKRONE (SLO)

**⚠** Baro-VNAV NA when using Centralia altimeter setting. For uncompensated Baro-VNAV systems, LNAV/VNAV NA below -21°C (-5°F) or above 54°C (130°F). When local altimeter setting not received, use Centralia altimeter setting: increase LPV DA to 801 feet; increase LNAV/VNAV DA to 890 feet and visibility 1/8 SM; increase all MDAs 40 feet and LNAV Cats C/D visibility 1/8 SM and Circling Cats C/D visibility 1/4 SM. DME/DME RNP-0.3 NA.

**MISSED APPROACH:**  
Climb to 2600 direct EMLIJ and hold.

AWOS-3PT <b>118.525</b>	KANSAS CITY CENTER <b>127.7 351.825</b>	UNICOM <b>122.725 (CTAF) 0</b>
----------------------------	--	-----------------------------------



CATEGORY	A	B	C	D
LPV DA		773-1	200 (200-1)	
LNAV/VNAV DA		862-1	289 (300-1)	
LNAV MDA		940-1	367 (400-1)	
CIRCLING	1040-1	467 (500-1)	1380-2 1/4 807 (900-2 1/4)	1380-2 1/2 807 (900-2 1/2)

EC-3, 14 MAY 2026 to 11 JUN 2026

EC-3, 14 MAY 2026 to 11 JUN 2026