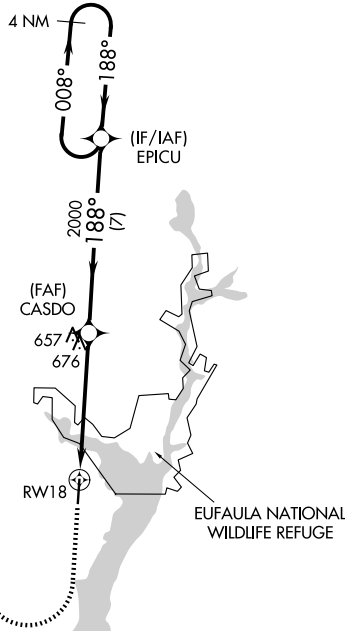
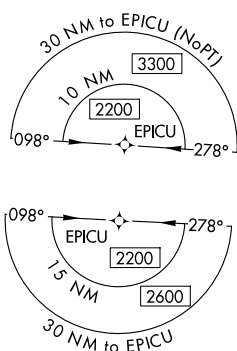


WAAS CH 86723 W18A	APP CRS 188°	Rwy Ldg TDZE Apt Elev	5000 285 285
--	------------------------	-----------------------------	---

RNAV (GPS) RWY 18

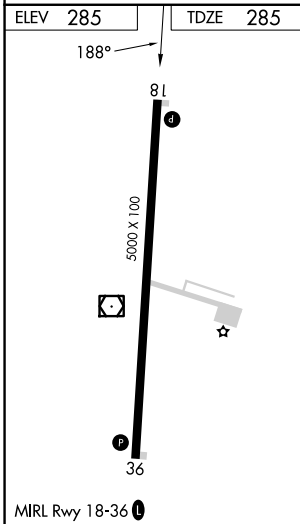
WEEDON FLD (EUF')

RNP APCH - GPS.			MISSED APPROACH: Climb to 1300 then climbing right turn to 2200 direct EPICU and hold.
When local altimeter setting not received, use Columbus, GA altimeter setting and increase LPV DA to 632 feet and all visibilities $\frac{1}{8}$ SM; increase LNAV/VNAV DA to 739 feet and all visibilities $\frac{1}{8}$ SM; increase all MDAs 40 feet and LNAV visibility Cats C and D $\frac{1}{8}$ SM and Circling visibility Cats C and D $\frac{1}{4}$ SM. For uncompensated Baro-VNAV systems, LNAV/VNAV NA below -15°C or above 54°C. Baro-VNAV and VDP NA when using Columbus, GA altimeter setting.			
ASOS 128.325	ATLANTA APP CON * 125.5 323.1	CLNC DEL 134.25 339.8	UNICOM 122.8 (CTAF) 0



SE-4, 14 MAY 2026 to 11 JUN 2026

SE-4, 14 MAY 2026 to 11 JUN 2026



1300 2200 EPICU	VGSI and RNAV glidepath not coincident (VGSI Angle 3.00/TCH 26).	4 NM Holding Pattern		
	CASDO 2000 188° 2000 008° 188° 2200	EPICU GP 3.00° TCH 40		
CATEGORY	A	B	C	D
LPV DA	599-1		314 (400-1)	
LNAV/VNAV DA	706-1¼		421 (500-1¼)	
LNAV MDA	940-1	655 (700-1)	940-1⅞	655 (700-1⅞)
CIRCLING	940-1	655 (700-1)	1060-2¼ 775 (800-2¼)	1060-2½ 775 (800-2½)