

WAAS CH <b>70732</b> <b>W23A</b>	APP CRS <b>227°</b>	Rwy Ldg TDZE Apt Elev	<b>3600</b> <b>1258</b> <b>1278</b>
--	------------------------	-----------------------------	---

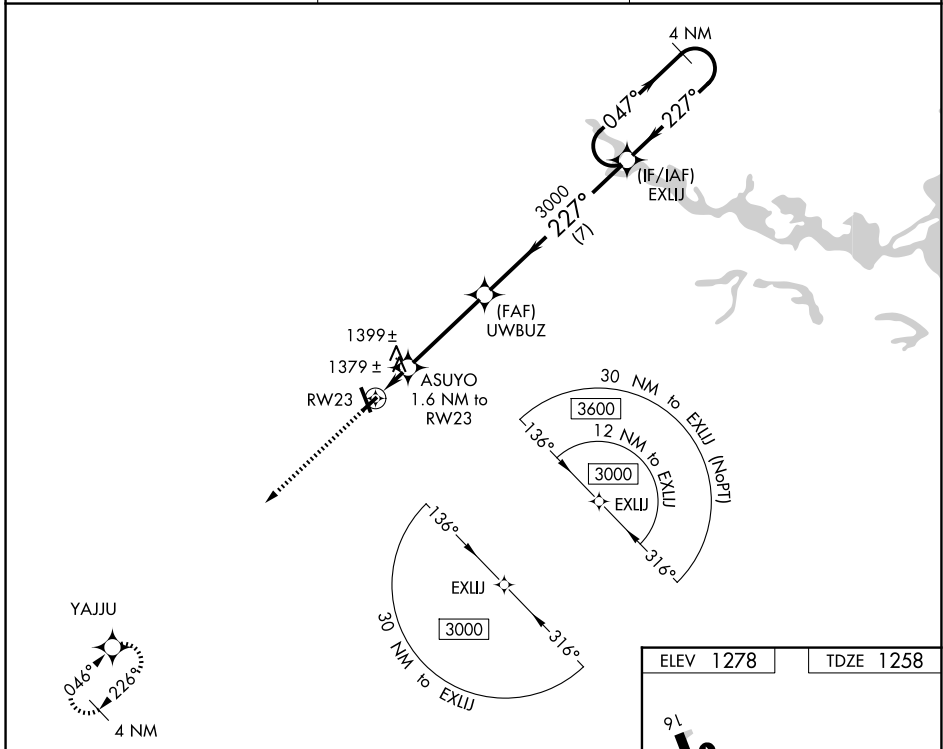
# RNAV (GPS) RWY 23

MARSHFIELD MUNI (MFI)

**▽** DME/DME RNP-0.3 NA. Helicopter visibility reduction below 3/4 SM NA. When local altimeter setting not received, use Central Wisconsin altimeter setting and increase all MDA 60 feet, increase LP and LNAV visibility Cat C/D 1/4 mile.

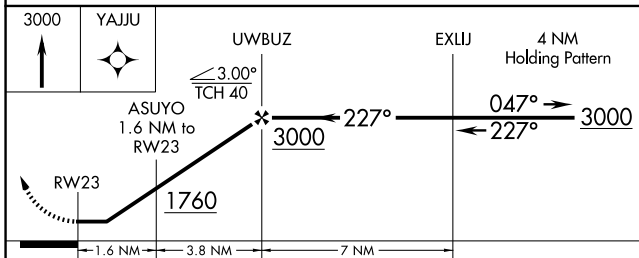
**▲** MISSED APPROACH: Climb to 3000 direct YAJJU and hold.

ASOS <b>121.575</b>	MINNEAPOLIS CENTER <b>124.4 317.7</b>	UNICOM <b>123.0 (CTAF) 0</b>
------------------------	--	---------------------------------

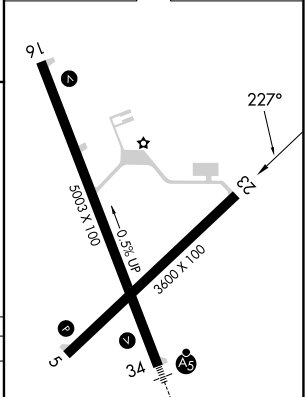


EC-3, 14 MAY 2026 to 11 JUN 2026

EC-3, 14 MAY 2026 to 11 JUN 2026



ELEV 1278	TDZE 1258
-----------	-----------



CATEGORY	A	B	C	D
LP	MDA 1640-1	382 (400-1)	1640-1 1/8	382 (400-1 1/8)
LNAV	MDA 1660-1	402 (400-1)	1660-1 1/8	402 (400-1 1/8)
CIRCLING	1760-1	482 (500-1)	2020-2 1/4 742 (800-2 1/4)	2020-2 1/2 742 (800-2 1/2)

REIL Rwy 16 **0**  
MIRL Rwy 5-23 and 16-34 **0**