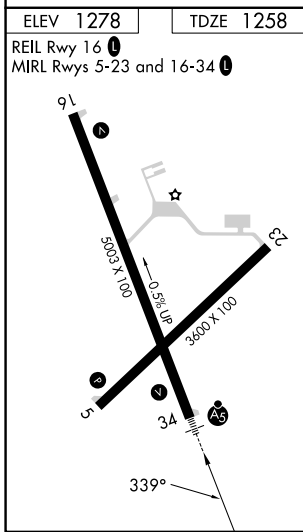
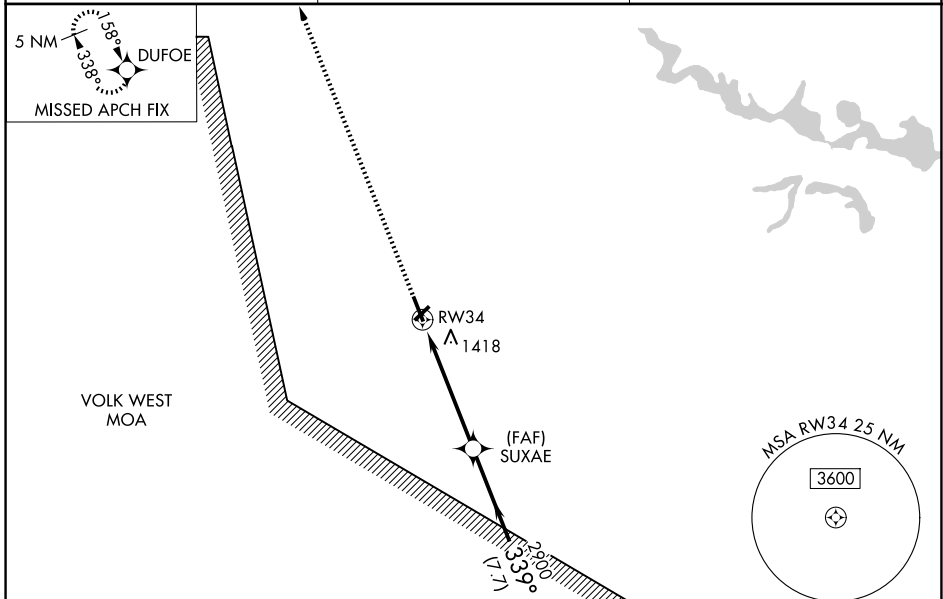


WAAS CH <b>58101</b> <b>W34A</b>	APP CRS <b>339°</b>	Rwy Ldg TDZE <b>1258</b> Apt Elev <b>1278</b>
--	------------------------	---

# RNAV (GPS) RWY 34

MARSHFIELD MUNI (MFI)

<p>For inoperative MALSR increase LPV all Cats visibility to 1, increase LNAV Cats A and B to 1 and Cat D to 1/4. If local altimeter setting not received, use Central Wisconsin altimeter setting and increase all DAs/MDAs 60 feet. VDP and Baro-VNAV NA when using Central Wisconsin altimeter setting. For uncompensated Baro-VNAV systems, LNAV/VNAV NA below -17° C (2° F) or above 46° C (115° F). DME/DME RNP-0.3 NA.</p>		<p>MALSR</p>	<p>MISSED APPROACH: Climb to 3000 direct DUFOE and hold.</p>
ASOS <b>121.575</b>	MINNEAPOLIS CENTER <b>124.4 317.7</b>	UNICOM <b>123.0 (CTAF)</b>	



ELEV 1278	TDZE 1258
3000	DUFOE
<p>* LNAV only</p> <p>* 1.2 NM to RW34</p>	
<p>SUXAE</p> <p>VECSU</p> <p>Procedure Turn NA</p> <p>GP 3.00° TCH 42</p>	
<p>1.2</p> <p>3.8 NM</p> <p>7.7 NM</p>	
CATEGORY	A B C D
LPV DA	1508-3/4 250 (300-3/4)
LNAV/VNAV DA	1718-1/4 460 (500-1/4)
LNAV MDA	1680-3/4 422 (500-3/4) 1680-1 422 (500-1)
CIRCLING	1760-1 3/4 482 (500-1 3/4) 2020-2 1/4 742 (800-2 1/4) 2020-2 1/2 742 (800-2 1/2)

EC-3, 14 MAY 2026 to 11 JUN 2026

EC-3, 14 MAY 2026 to 11 JUN 2026