

WAAS CH 81913 W05A	APP CRS 047°	Rwy Idg TDZE Apt Elev	6002 1184 1201
--	------------------------	-----------------------------	---

AL-5369 (FAA)

RNAV (GPS) RWY 5

SHENANDOAH VALLEY RGNL (SHD)

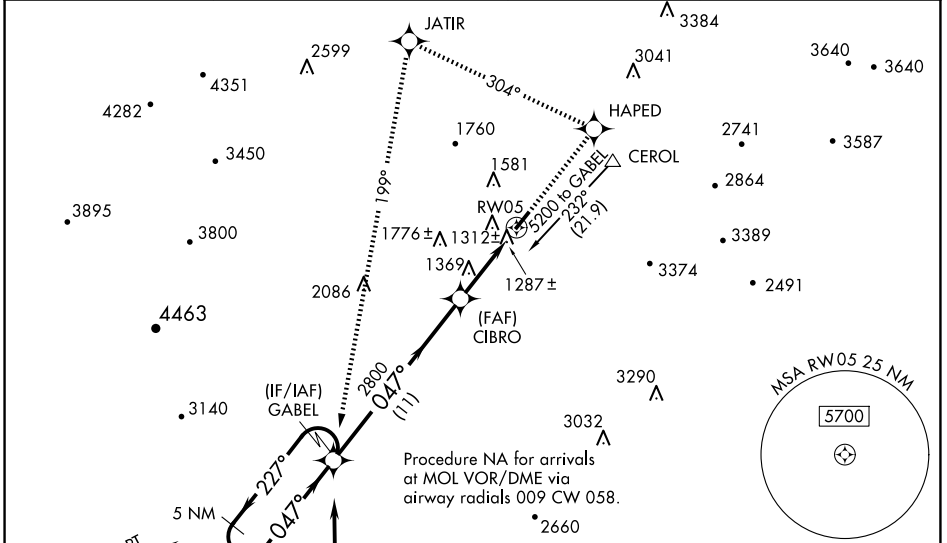
RNP APCH.

▽ For inoperative MALSRS when using Charlottesville altimeter setting, increase LPV visibility to 1½ mile. For uncompensated Baro-VNAV systems, LNAV/VNAV NA below -17°C or above 46°C. Baro-VNAV and VDP NA when using Charlottesville altimeter setting. When local altimeter setting not received, use Charlottesville altimeter setting and increase all DA 130 feet and all MDA 140 feet. Increase LPV all Cats visibility ¼ SM, LNAV/VNAV all Cats ½ SM, LNAV Cat C/D ¼ SM, Circling Cat C ½ SM and Cat D ¼ SM.

▲ MALSRS

MISSED APPROACH: Climb to 5200 direct HAPED and left turn via track 304° to JATIR and left turn via track 199° to GABEL and hold.

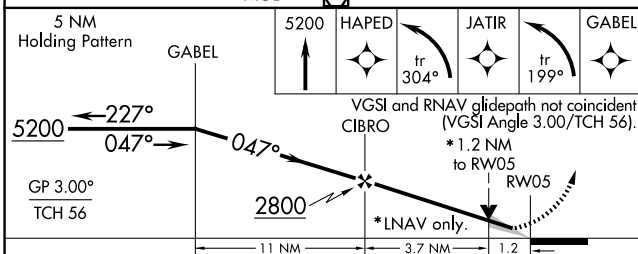
AWOS-3 124.925	POTOMAC APP CON 132.85 323.125	CLNC DEL 118.35	UNICOM 123.0 (CTAF) 0
--------------------------	--	---------------------------	---------------------------------



NE-3, 14 MAY 2026 to 11 JUN 2026

NE-3, 14 MAY 2026 to 11 JUN 2026

ELEV 1201	D TDZE 1184
-----------	--------------------



CATEGORY	A	B	C	D
LPV DA	1384-½ 200 (200-½)			
LNAV/VNAV DA	1563-¾ 379 (400-¾)			
LNAV MDA	1620-½ 436 (500-½)	1620-¾ 436 (500-¾)		1620-1 436 (500-1)
CIRCLING	1660-1 459 (500-1)	1760-1 559 (600-1)	1900-2 699 (700-2)	2060-2¾ 859 (900-2¾)

