

(AHMET5.KKIDS) 25331

AL-5370 (FAA)

BURKE LAKEFRONT (BKL)  
CLEVELAND, OHIO

# AHMET FIVE DEPARTURE (RNAV)

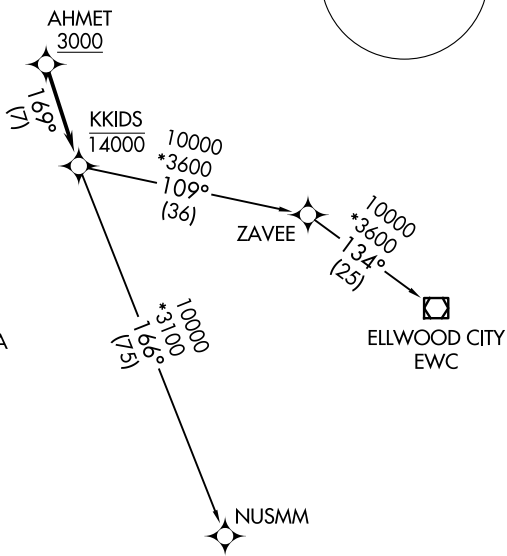
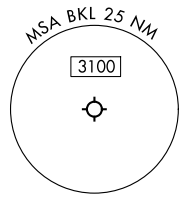
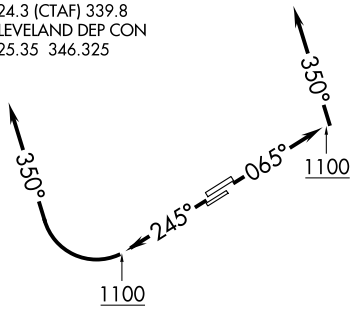
ATIS  
 125.25  
 CLNC DEL  
 339.8  
 121.9 (when tower closed)  
 GND CON  
 121.9 339.8  
 LAKEFRONT TOWER ★  
 124.3 (CTAF) 339.8  
 CLEVELAND DEP CON  
 125.35 346.325

RNAV 1 - DME/DME/IRU or GPS.  
 RADAR required.

**TOP ALTITUDE:  
 ASSIGNED BY ATC**

### TAKEOFF MINIMUMS:

Rwys 6L/R, 24R: Standard with minimum climb of 500' per NM to 1100.  
 Rwy 24L: 400-1<sup>3</sup>/<sub>8</sub> or standard with minimum climb of 757' per NM to 1000.



NOTE: Rwy 6R/24L: Takeoff minimums NA when control tower closed.

NOTE: Chart not to scale.

## DEPARTURE ROUTE DESCRIPTION

**TAKEOFF RUNWAYS 6L/R:** Climb on heading 065° to 1100, then on heading 350° or as assigned by ATC, maintain 2000 (do not climb above 2000) for RADAR vectors to cross AHMET at or above 3000, thence....  
**TAKEOFF RUNWAYS 24L/R:** Climb on heading 245° to 1100, then right turn to heading 350° or as assigned by ATC, maintain 2000 (do not climb above 2000) for RADAR vectors to cross AHMET at or above 3000, thence....

....on track 169° to cross KKIDS at or below 14000, then on (transition).  
 Maintain ATC assigned altitude, expect filed altitude ten minutes after departure.

ELLWOOD CITY TRANSITION (AHMET5.EWC)  
 NUSMM TRANSITION (AHMET5.NUSMM)

AHMET FIVE DEPARTURE (RNAV)  
 (AHMET5.KKIDS) 27NOV25

CLEVELAND, OHIO  
 BURKE LAKEFRONT (BKL)

EC-2, 14 MAY 2026 to 11 JUN 2026

EC-2, 14 MAY 2026 to 11 JUN 2026