

(GTLKE5, GTLKE) 27NOV25
GTIKE FIVE DEPARTURE (RNAV)

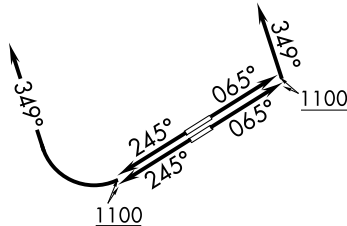
CLEVELAND, OHIO
BURKE LAKEFRONT (BKL)

CLEVELAND DEP CON
 125.35 346.325
 ATIS
 125.25
 CLNC DEL
 339.8
 121.9 (when twr closed)
 GND CON
 121.9 339.8
 LAKEFRONT TOWER*
 124.3 (CTAF) 339.8

RNAV 1 - DME/DME/IRU or GPS.
 RADAR required.

**TOP ALTITUDE:
ASSIGNED BY ATC**

NOTE: Rwy 6R/24L: Takeoff minimums NA when control tower closed.

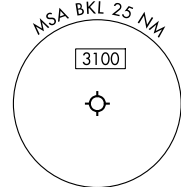
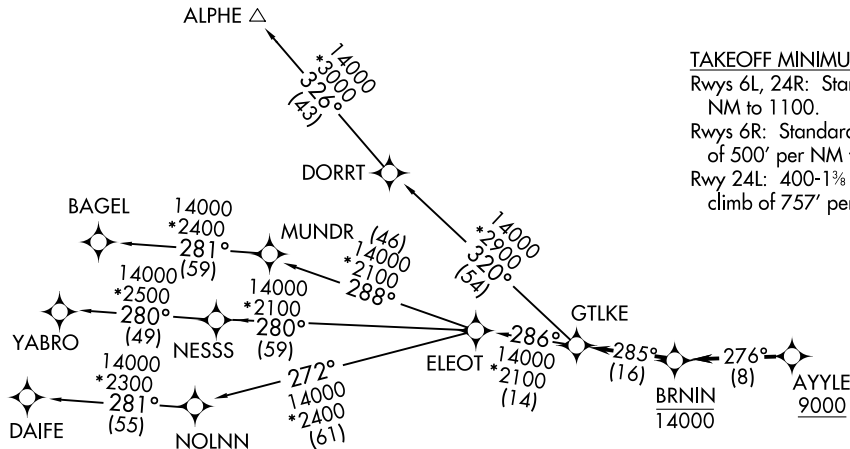


TAKEOFF MINIMUMS:

Rwys 6L, 24R: Standard with minimum climb of 500' per NM to 1100.

Rwys 6R: Standard with minimum climb of 500' per NM to 1100. NA when control tower closed.

Rwy 24L: 400-1 $\frac{3}{4}$ or standard with minimum climb of 757' per NM to 1000. NA when control tower closed.



NOTE: Chart not to scale.

(CONTINUED ON FOLLOWING PAGE)

(GTLKE5, GTLKE) 25331
GTIKE FIVE DEPARTURE (RNAV)

AL-5370 (FAA)
BURKE LAKEFRONT (BKL)
 CLEVELAND, OHIO

GTLKE FIVE DEPARTURE (RNAV)



DEPARTURE ROUTE DESCRIPTION

TAKEOFF RUNWAYS 6L/R: Climb on heading 065° to 1100, then on heading 349° or as assigned by ATC, maintain 2000 (do not climb above 2000) for RADAR vectors to cross AYYLE at or above 9000, thence....

TAKEOFF RUNWAYS 24L/R: Climb on heading 245° to 1100, then right turn heading 349° or as assigned by ATC, maintain 2000 (do not climb above 2000) for RADAR vectors to cross AYYLE at or above 9000, thence....

....on track 276° to cross BRNIN at or below 14000, then on track 285° to GTLKE then on (transition). Maintain ATC assigned altitude, expect filed altitude 10 minutes after departure.

ALPHE TRANSITION (GTLKE5.ALPHE)

BAGEL TRANSITION (GTLKE5.BAGEL)

DAIFE TRANSITION (GTLKE5.DAIFE)

YABRO TRANSITION (GTLKE5.YABRO)

EC-2, 14 MAY 2026 to 11 JUN 2026

EC-2, 14 MAY 2026 to 11 JUN 2026