

ZAAPA SIX DEPARTURE (RNAV)

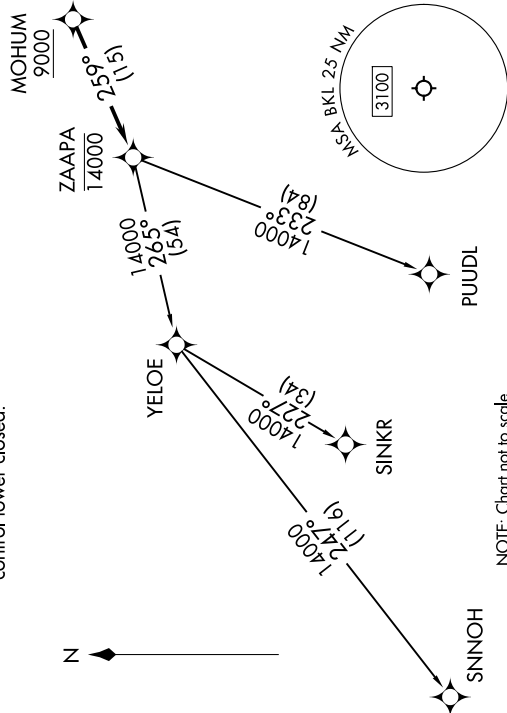
EC-2, 14 MAY 2026 to 11 JUN 2026

<p>RNAV 1 - DME/DME/IRU or GPS.</p> <p>RADAR required.</p>	<p>TOP ALTITUDE: ASSIGNED BY ATC</p>
--	---

<p>CLEVELAND DEP CON 125.35 346.325</p> <p>ATIS 125.25</p> <p>CINIC DEL 339.8</p> <p>121.9 (when twr closed)</p> <p>GND CON 121.9 339.8</p> <p>LAKEFRONT TOWER* 124.3 (CTAF) 339.8</p>	<p>TAKEOFF MINIMUMS:</p> <p>Rwys 6L, 24R: Standard with minimum climb of 500' per NM to 1100.</p> <p>Rwys 6R: Standard with minimum climb of 500' per NM to 1100. NA when control tower closed.</p> <p>Rwy 24L: 400-1³/₄ or standard with minimum climb of 757' per NM to 1000. NA when control tower closed.</p>
---	--

NOTE: PUUDL TRANSITION: For aircraft at or below FL220 only or as assigned by ATC.

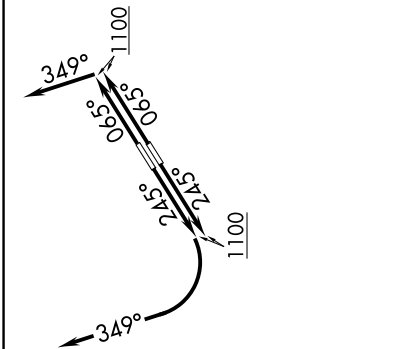
NOTE: Rwy 6R/24L: Takeoff minimums NA when control tower closed.



NOTE: Chart not to scale.

ZAAPA SIX DEPARTURE (RNAV)

EC-2, 14 MAY 2026 to 11 JUN 2026



DEPARTURE ROUTE DESCRIPTION

TAKEOFF RUNWAY 6L/R: Climb on heading 065° to 1100, then on heading 349° or as assigned by ATC, maintain 2000 (do not climb above 2000) for RADAR vectors to cross MOHUM at or above 9000, thence...

TAKEOFF RUNWAY 24L/R: Climb on heading 245° to 1100, then right turn heading 349° or as assigned by ATC, maintain 2000 (do not climb above 2000) for RADAR vectors to cross MOHUM at or above 9000, thence...

...on track 259° to cross ZAAPA at or below 14000, then on (transition). Maintain ATC assigned altitude, expect filed altitude ten minutes after departure.

PUUDL TRANSITION (ZAAPA6.PUUDL)
SINKR TRANSITION (ZAAPA6.SINKR)
SNNOH TRANSITION (ZAAPA6.SNNOH)