

WAAS CH 93699 W18A	APP CRS 185°	Rwy Ldg TDZE Apt Elev	6503 866 866
--	------------------------	-----------------------------	---

RNAV (GPS) RWY 18

METTEL FLD (CEV)

RNP APCH.

NA For uncompensated Baro-VNAV systems, LNAV/VNAV NA below -16°C or above 54°C. VDP and Baro-VNAV NA when using James M. Cox Dayton Intl altimeter setting. Circling Rwy 4, 22 NA at night. For inop ALS increase LPV all Cats visibility to 1 SM, LNAV/VNAV all Cats visibility to 1½ SM, and LNAV Cats A/B visibility to 1 SM. For inop ALS when using James M. Cox Dayton Intl altimeter setting, increase LPV all Cats visibility to 1 SM, LNAV/VNAV all Cats visibility to 1½ SM. When local altimeter setting not received, use James M. Cox Dayton Intl altimeter setting and increase all DA 121 feet and all MDA 140 feet: increase LPV and LNAV/VNAV all Cats and LNAV Cat C/D visibility ¾ SM, and Circling Cat C/D visibility ½ SM.

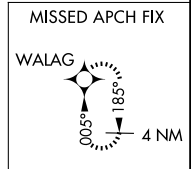
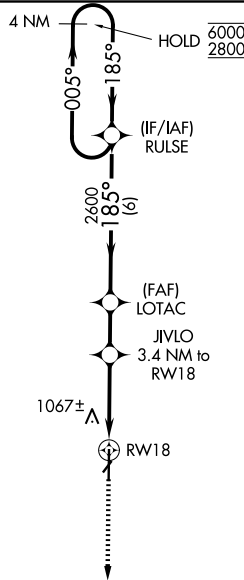
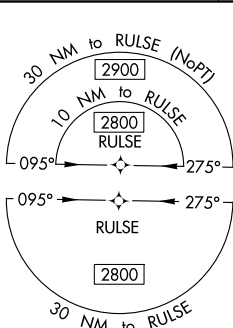


MISSED APPROACH:
Climb to 2800 direct WALAG and hold.

AWOS-3
118.325

COLUMBUS APP CON
134.45 352.05

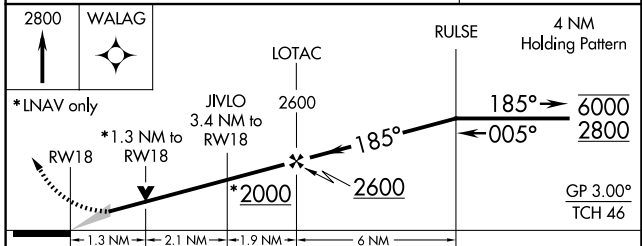
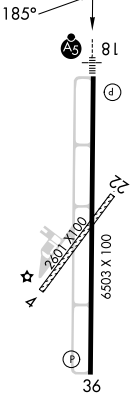
UNICOM
122.8 (CTAF)



EC-2, 14 MAY 2026 to 11 JUN 2026

EC-2, 14 MAY 2026 to 11 JUN 2026

ELEV	866	TDZE	866
------	-----	------	-----



CATEGORY	A	B	C	D
LPV DA		1116-½	250 (300-½)	
LNAV/VNAV DA		1385-1	519 (600-1)	
LNAV MDA	1320-½	454 (500-½)	1320-⅞	454 (500-⅞)
CIRCLING	1440-1 574 (600-1)	1540-1 674 (700-1)	1620-2¼ 754 (800-2¼)	1620-2½ 754 (800-2½)

REIL Rwy 36
MIRL Rwy 18-36