

WAAS CH <b>93929</b> <b>W36A</b>	APP CRS <b>005°</b>	Rwy Ldg TDZE Apt Elev	<b>6503</b> <b>862</b> <b>866</b>
--	------------------------	-----------------------------	---

# RNAV (GPS) RWY 36

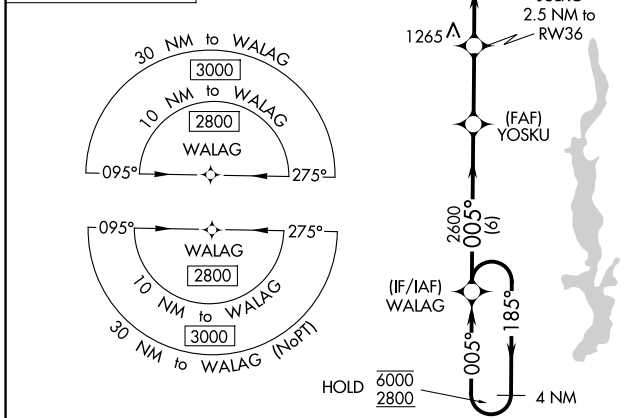
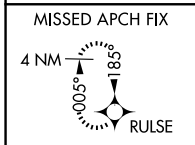
METTEL FLD (CEV)

RNP APCH.

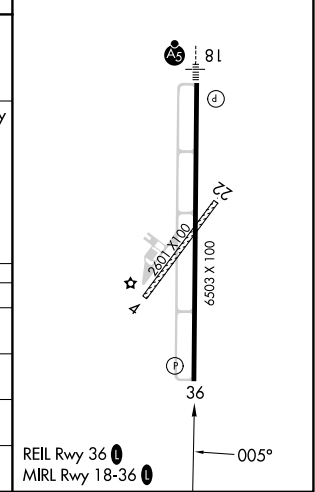
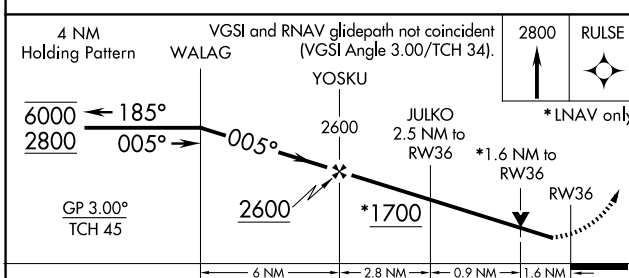
**NA** For uncompensated Baro-VNAV systems, LNAV/VNAV NA below -16°C or above 54°C. VDP and Baro VNAV NA when using James M. Cox Dayton Intl altimeter setting. Rwy 36 helicopter visibility reduction below 3/4 SM NA. Circling Rwy 4, 22 NA at night. When local altimeter setting not received, use James M Cox Dayton Intl altimeter setting and increase LPV DA to 1253 feet and visibility all Cats to 1 1/8 SM, LNAV/VNAV DA to 1472 feet and visibility all Cats to 1 1/4 SM, increase all MDA 140 feet and LNAV Cats C/D visibility to 1 1/8 SM, Circling Cat B to 1 1/4 SM, Cat C to 2 3/4 SM, and Cat D to 3 SM.

MISSED APPROACH: Climb to 2800 direct RULSE and hold.

AWOS-3 <b>118.325</b>	COLUMBUS APP CON <b>134.45 352.05</b>	UNICOM <b>122.8 (CTAF) 0</b>
--------------------------	--	---------------------------------



ELEV 866	TDZE 862
----------	----------



CATEGORY	A	B	C	D
LPV DA	1132-7/8 270 (300-7/8)			
LNAV/VNAV DA	1351-1 3/8 489 (500-1 3/8)			
LNAV MDA	1400-1	538 (600-1)	1400-1 1/2	538 (600-1 1/2)
CIRCLING	1440-1 574 (600-1)	1540-1 674 (700-1)	1620-2 1/4 754 (800-2 1/4)	1620-2 1/2 754 (800-2 1/2)

REIL Rwy 36 0  
MIRL Rwy 18-36 0

EC-2, 14 MAY 2026 to 11 JUN 2026

EC-2, 14 MAY 2026 to 11 JUN 2026