

|  |                        |                             |   |
|--|------------------------|-----------------------------|---|
| WAAS<br>CH <b>97427</b><br><b>W09A</b> | APP CRS<br><b>096°</b> | Rwy Ldg<br>TDZE<br>Apt Elev | <b>6579</b><br><b>1321</b><br><b>1328</b> |
|--|------------------------|-----------------------------|---|


# RNAV (GPS) RWY 9

GAYLORD RGNL (G.L.R.)

RNP APCH - GPS.

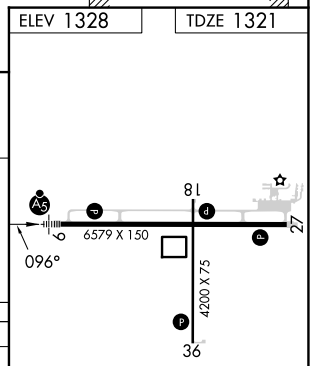
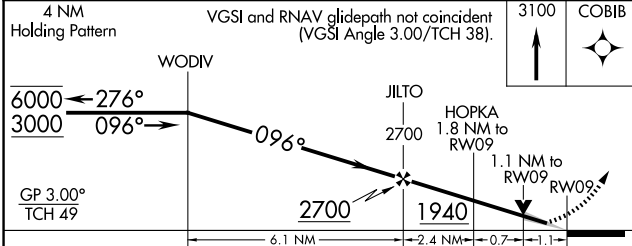
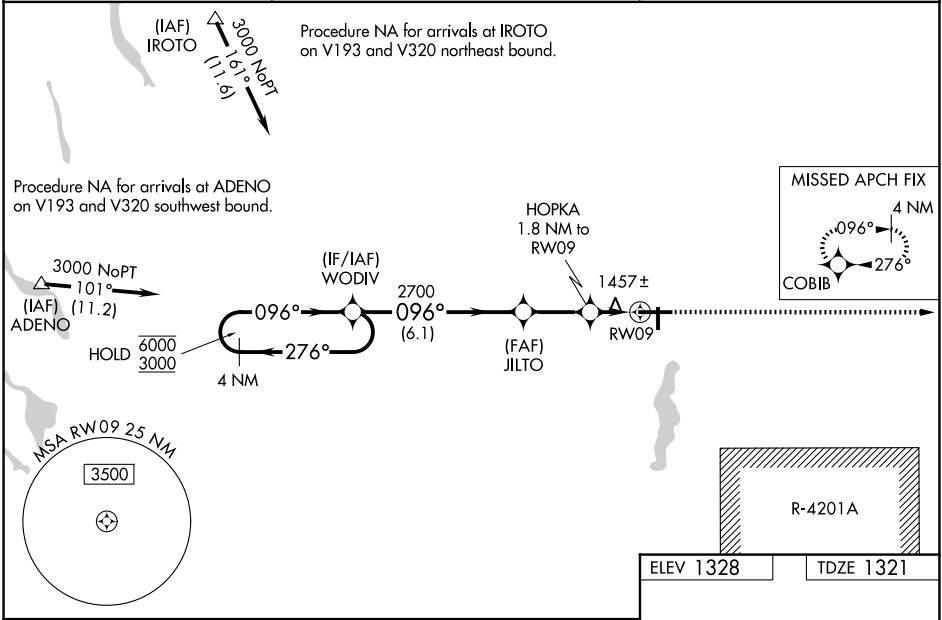
**⚠** Circling Rwy 18, 36 NA at night. Baro-VNAV and VDP NA when using GOV altimeter setting. For uncompensated Baro-VNAV systems, LNAV/VNAV NA below -21° C or above 54° C.

**⚠** Inoperative table does not apply to LPV. When local altimeter setting not received, use GOV altimeter setting: increase LPV DA to 1591 feet; increase LNAV/VNAV DA to 1790 feet and all visibilities ½ SM; increase all MDAs 80 feet and LNAV and Circling visibility Cats C and D ½ SM. For inoperative ALS when using GOV altimeter setting, increase LNAV/VNAV visibility all Cats to 1 ½ SM and LNAV visibility Cats C and D to 1 ½ SM.

MALSR 

**MISSED APPROACH:**  
Climb to 3100 direct COBIB and hold.

|                        |   |                                 |
|------------------------|---|---------------------------------|
| ASOS<br><b>118.375</b> | MINNEAPOLIS CENTER<br><b>134.6 354.05</b> | UNICOM<br><b>122.8 (CTAF) 0</b> |
|------------------------|---|---------------------------------|



| CATEGORY     | A                     | B                     | C                     | D                       |
|--------------|-----------------------|-----------------------|-----------------------|-------------------------|
| LPV DA       |                       | 1521-¾                | 200 (200-¾)           |                         |
| LNAV/VNAV DA |                       | 1720-¾                | 399 (400-¾)           |                         |
| LNAV MDA     |                       | 1720-¾                | 399 (400-¾)           |                         |
| CIRCLING     | 1840-1<br>512 (600-1) | 1940-1<br>612 (700-1) | 2040-2<br>712 (800-2) | 2080-2½<br>752 (800-2½) |

REIL Rwy 18, 27 and 36 **0**

MIRL Rwy 18-36 **0**

HIRL Rwy 9-27 **0**

EC-1, 14 MAY 2026 to 11 JUN 2026

EC-1, 14 MAY 2026 to 11 JUN 2026