

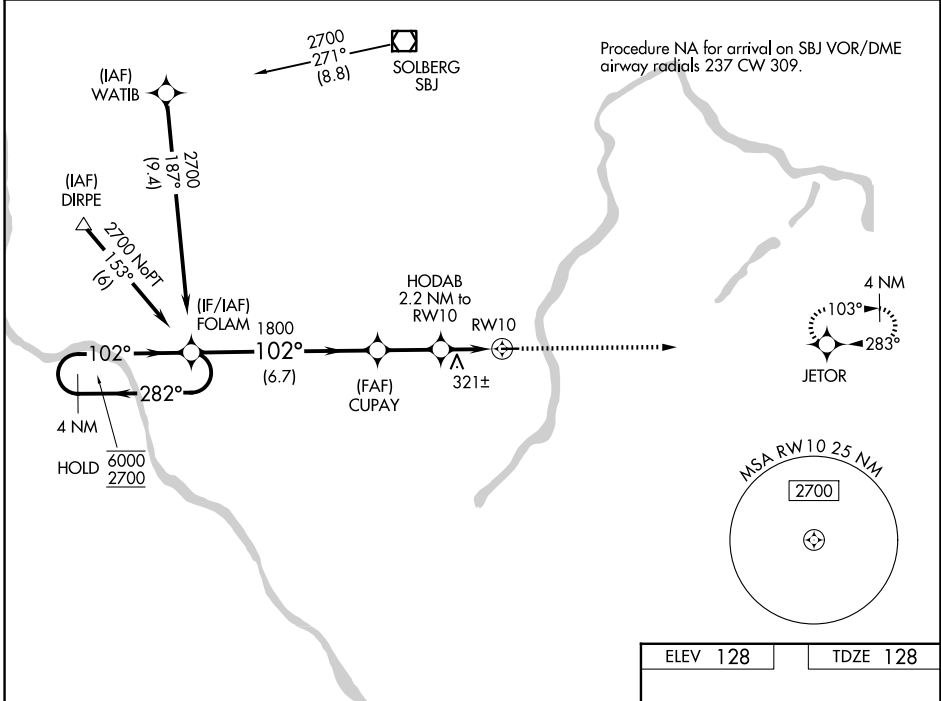
WAAS CH <b>86843</b> <b>W10A</b>	APP CRS <b>102°</b>	Rwy Ldg TDZE <b>128</b> Apt Elev <b>128</b>	<b>3499</b>
--	------------------------	---	-------------

# RNAV (GPS) RWY 10

PRINCETON (39N)

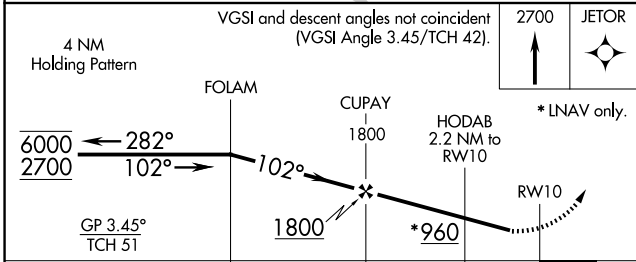
RNP APCH - GPS.		MISSED APPROACH: Climb to 2700 direct JETOR and hold.
<p>▼ Rwy 10 helicopter visibility reduction below <math>\frac{3}{4}</math> SM NA. Circling Rwy 28 NA at night.</p> <p>▲ NA Baro-VNAV NA. Use Trenton altimeter setting.</p>		

TTN ASOS <b>126.775</b>	NEWARK APP CON <b>132.8 379.9</b>	UNICOM <b>122.725</b> (CTAF)	<b>123.05</b> 0
----------------------------	--------------------------------------	---------------------------------	-----------------



NE-2, 14 MAY 2026 to 11 JUN 2026

NE-2, 14 MAY 2026 to 11 JUN 2026



CATEGORY	A	B	C	D
LPV DA		441-1	313 (400-1)	
LNAV/VNAV DA		533-1 $\frac{1}{8}$	405 (500-1 $\frac{1}{8}$ )	
LNAV MDA	580-1	452 (500-1)	580-1 $\frac{3}{8}$	452 (500-1 $\frac{3}{8}$ )
CIRCLING	760-1 632 (700-1)	840-1 712 (800-1)	940-2 $\frac{1}{2}$ 812 (900-2 $\frac{1}{2}$ )	1000-2 $\frac{3}{4}$ 872 (900-2 $\frac{3}{4}$ )

