

WAAS CH <b>86904</b> <b>W23A</b>	APP CRS <b>230°</b>	Rwy Idg TDZE Apt Elev	<b>5500</b> <b>185</b> <b>192</b>
--	------------------------	-----------------------------	---

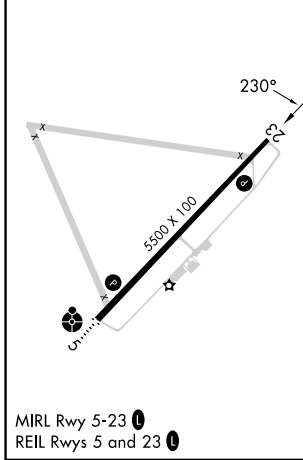
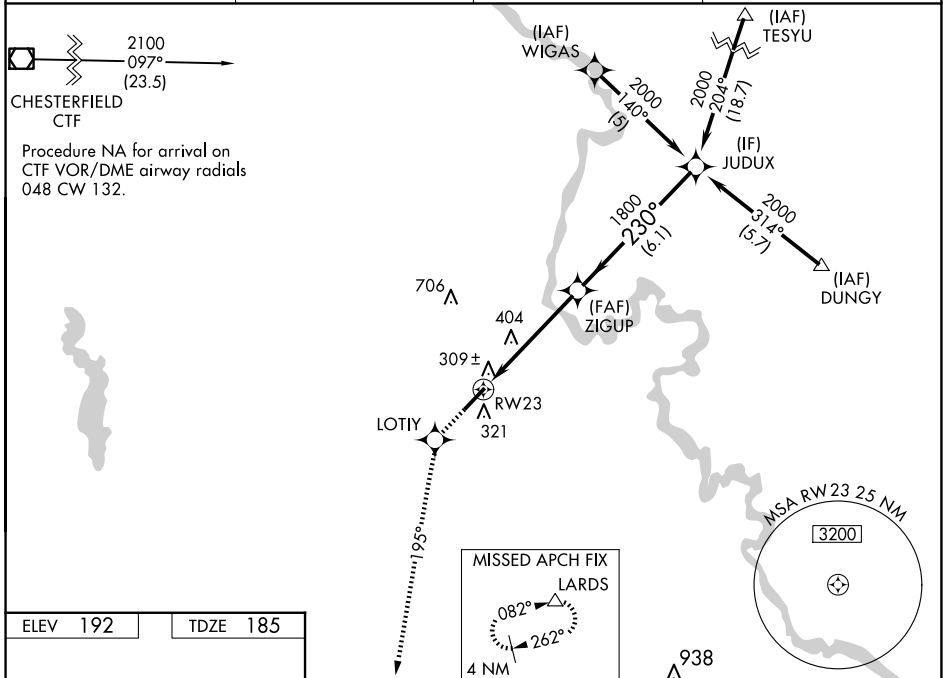
# RNAV (GPS) RWY 23

DARLINGTON COUNTY (UDG)

**⚠** For uncompensated Baro-VNAV systems, LNAV/VNAV NA below -15°C (5°F) or above 48°C (118°F). When local altimeter setting not received, use Florence altimeter setting: increase LPV DA to 527 feet and all visibilities ¼ SM; increase LNAV/VNAV DA to 627 feet; increase all MDAs 60 feet and visibility Cat D ¼ SM. DME/DME RNP-0.3 NA. Helicopter visibility reduction below ¾ SM NA. Baro-VNAV NA when using Florence altimeter setting.

**MISSED APPROACH:** Climb to 2000 direct LOTIY and via 195° track to LARDS and hold.

AWOS-3PT <b>119.925</b>	FLORENCE APP CON ★ <b>118.6 341.7</b>	CLNC DEL <b>118.55</b>	UNICOM <b>123.0(CTAF) 0</b>
----------------------------	--	---------------------------	--------------------------------



	2000	LOTIY	tr 195°	LARDS	JUDUX	2000
					ZIGUP	230°
					1800	
						Procedure Turn NA
						GP 3.00° TCH 40
CATEGORY	A	B	C	D		
LPV DA	479-1 294 (300-1)					
LNAV/VNAV DA	579-1½ 394 (400-1½)					
LNAV MDA	700-1	515 (600-1)	700-1½	515 (600-1½)	700-1¾	515 (600-1¾)
CIRCLING	700-1	508 (600-1)	720-1½	528 (600-1½)	1020-2¾	828 (900-2¾)

SE-2, 14 MAY 2026 to 11 JUN 2026

SE-2, 14 MAY 2026 to 11 JUN 2026