

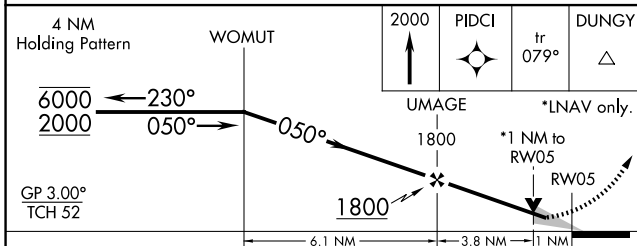
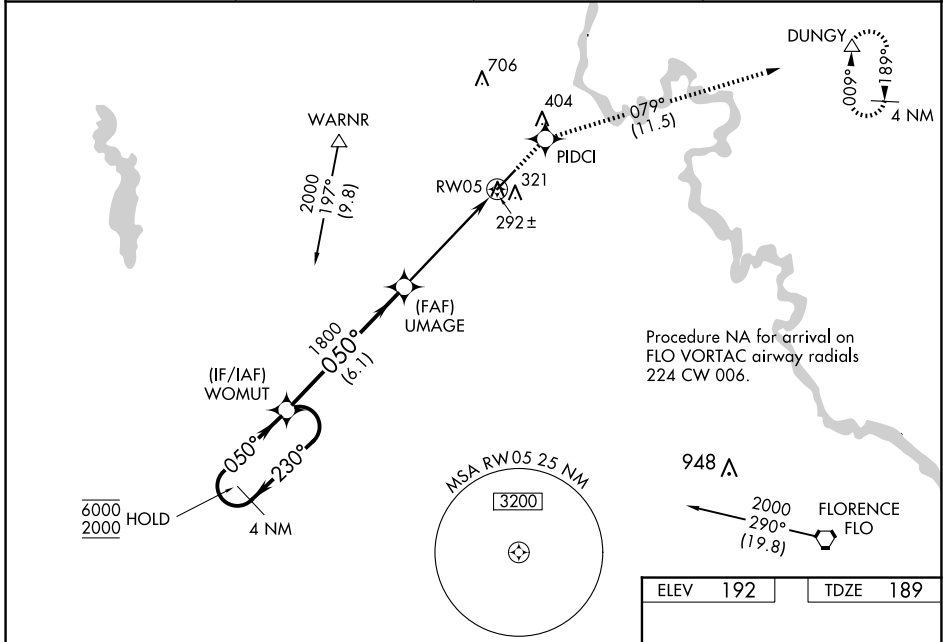
WAAS CH 42704 W05A	APP CRS 050°	Rwy Idg TDZE Apt Elev	5500 189 192
--	------------------------	-----------------------------	---

RNAV (GPS) RWY 5

DARLINGTON COUNTY (UDG)

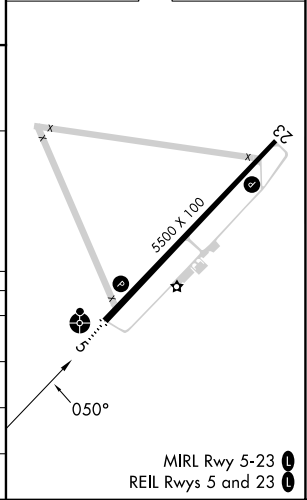
RNP APCH.		ODALS	MISSED APPROACH: Climb to 2000 direct PIDCI and on track 079° to DUNGY and hold.
<p>⚠ Inop table does not apply. For uncompensated Baro-VNAV systems, LNAV/VNAV NA below -15°C or above 54°C.</p>			

AWOS-3PT 119.925	FLORENCE APP CON * 118.6 341.7	CLNC DEL 118.55	UNICOM 123.0(CTAF) 0
----------------------------	--	---------------------------	--------------------------------



ELEV 192	TDZE 189
----------	----------

CATEGORY	A	B	C	D
LPV DA	493-1		304 (400-1)	
LNAV/VNAV DA	562-1¼		373 (400-1¼)	
LNAV MDA	560-1		371 (400-1)	
CIRCLING	640-1 448 (500-1)	660-1 468 (500-1)	720-1½ 528 (600-1½)	560-1¼ 371 (400-1¼) 1020-2¾ 828 (900-2¾)



SE-2, 14 MAY 2026 to 11 JUN 2026

SE-2, 14 MAY 2026 to 11 JUN 2026