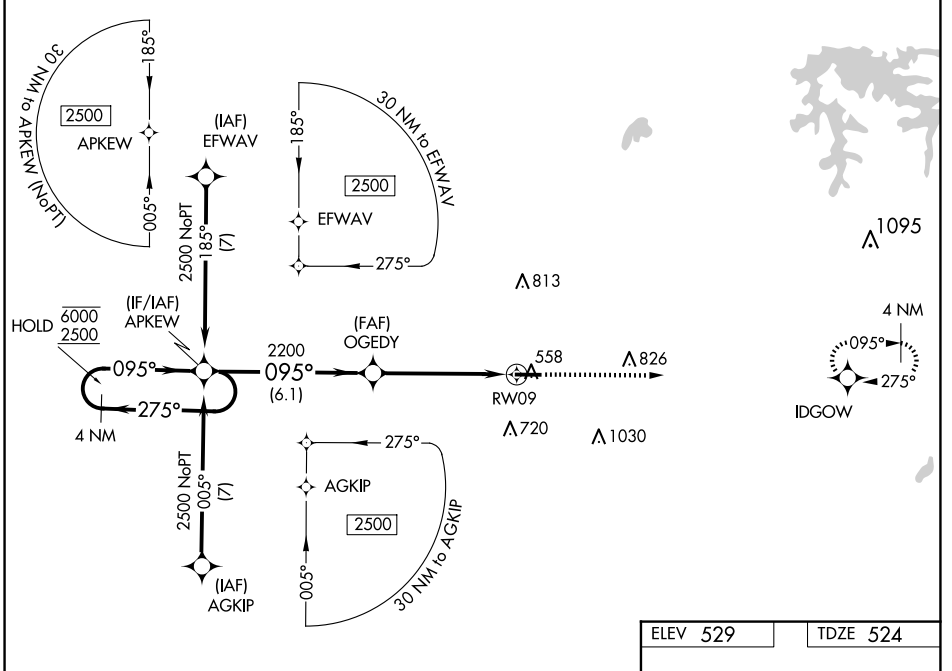


WAAS CH 49207 W09A	APP CRS 095°	Rwy Idg TDZE Apt Elev	5501 524 529
--	------------------------	-----------------------------	---

RNAV (GPS) RWY 9

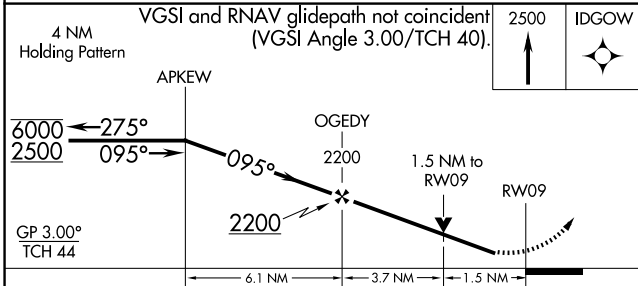
HUNTINGBURG (HNB)

RNP APCH - GPS.		MISSED APPROACH: Climb to 2500 direct IDGOW and hold.	
<p>▼ Rwy 9 helicopter visibility reduction below $\frac{3}{4}$ SM NA. For uncompensated Baro-VNAV systems, LNAV/VNAV NA below -16°C or above 54°C.</p>			
AWOS-3PT 118.250	EVANSVILLE APP CON * 124.025 290.9	CLNC DEL 118.8	UNICOM 122.8 (CTAF) 0



EC-2, 14 MAY 2026 to 11 JUN 2026

EC-2, 14 MAY 2026 to 11 JUN 2026



ELEV 529	TDZE 524			
<p>4 NM Holding Pattern</p> <p>VGSI and RNAV glidepath not coincident (VGSI Angle 3.00/TCH 40).</p> <p>APKEW</p> <p>OGEDY</p> <p>RWY 9</p> <p>5501 X 100</p> <p>0.3% UP</p> <p>27</p>				
CATEGORY	A	B	C	D
LPV DA	774- $\frac{3}{4}$ 250 (300- $\frac{3}{4}$)			
LNAV/VNAV DA	810- $\frac{7}{8}$ 286 (300- $\frac{7}{8}$)			
LNAV MDA	1020-1	496 (500-1)	1020-1 $\frac{3}{8}$	496 (500-1 $\frac{3}{8}$)
C CIRCLING	1020-1 491 (500-1)	1040-1 511 (600-1)	1040-1 $\frac{1}{2}$ 511 (600-1 $\frac{1}{2}$)	1380-2 $\frac{3}{4}$ 851 (900-2 $\frac{3}{4}$)
MIRL Rwy 9-27 0				
REIL Rws 9 and 27 0				