

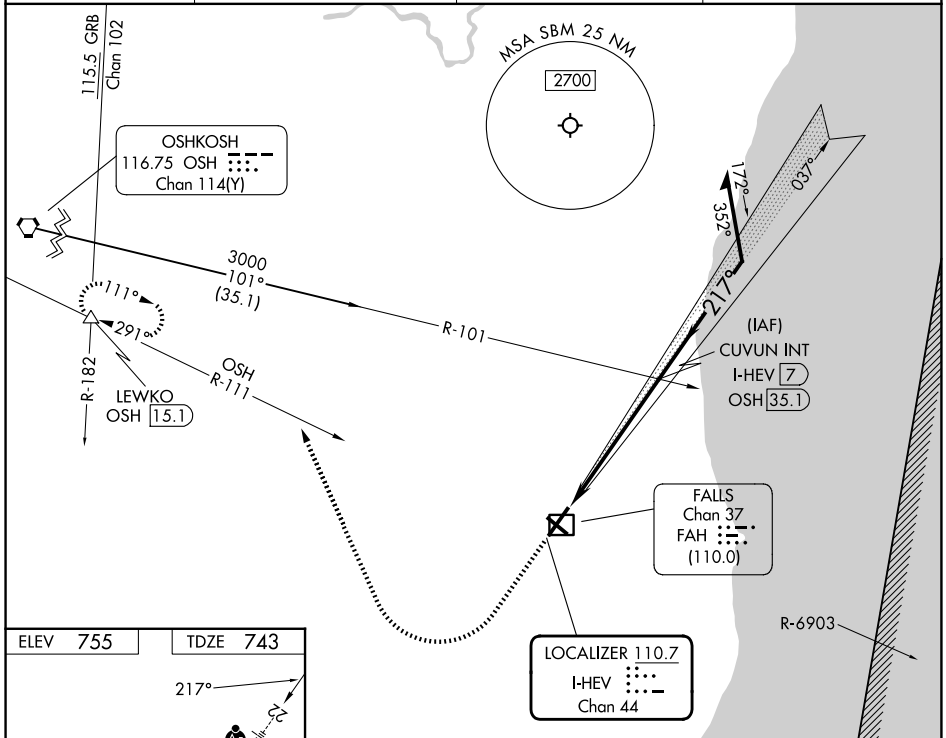
LOC/DME I-HEV 110.7 Chan 44	APP CRS 217°	Rwy Ldg TDZE Apt Elev	6801 743 755
---	------------------------	-----------------------------	---

ILS or LOC RWY 22

SHEBOYGAN COUNTY MEML INTL (SBM)

DME required.		MALSR	MISSED APPROACH: Climb to 1400 then climbing right turn to 3000 on heading 338° and OSH VORTAC R-111 to LEWKO INT/OSH 15.1 DME and hold.
▼ ▲ NA			

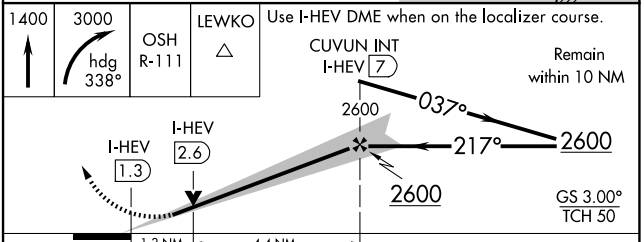
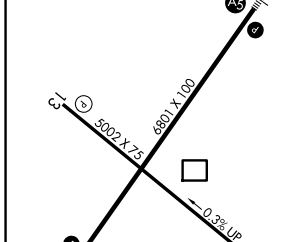
ASOS 118.425	MILWAUKEE APP CON 127.375 263.075	GCO 121.725	UNICOM 122.7 (CTAF)
------------------------	---	-----------------------	-------------------------------



EC-3, 14 MAY 2026 to 11 JUN 2026

EC-3, 14 MAY 2026 to 11 JUN 2026

ELEV 755	TDZE 743
----------	----------



CATEGORY	A	B	C	D
S-ILS 22	943-1/2 200 (200-1/2)			
S-LOC 22	1200-1/2 457 (500-1/2)	1200-7/8 457 (500-7/8)		
CIRCLING	1200-1 445 (500-1)	1240-1 485 (500-1)	1340-1 1/2 585 (600-1 1/2)	1360-2 605 (700-2)

- REIL Rwy 4
- MIRL Rwy 13-31
- HIRL Rwy 4-22