

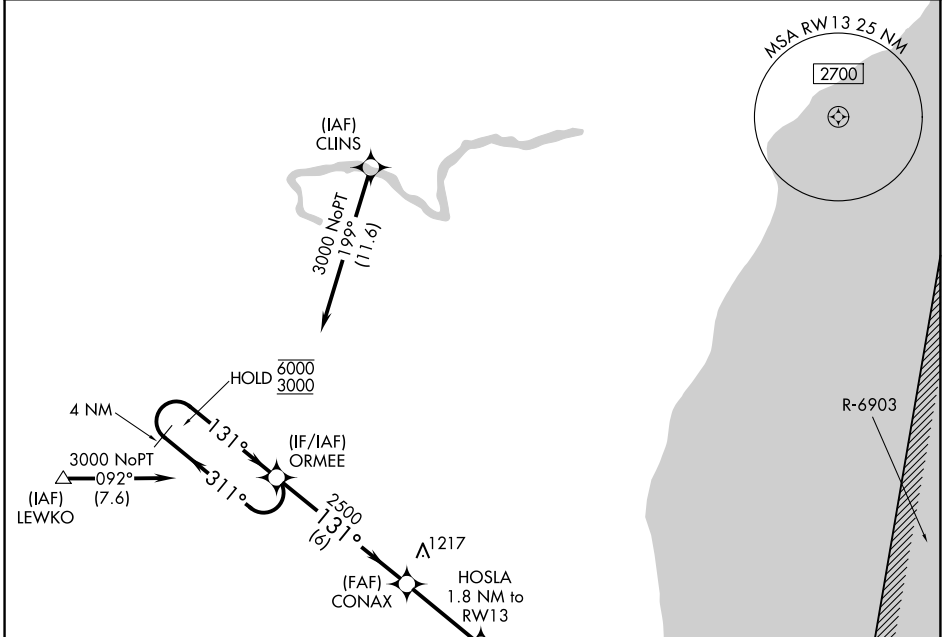
APP CRS	Rwy Ldg	<b>5002</b>
<b>131°</b>	TDZE	<b>755</b>
	Apt Elev	<b>755</b>

# RNAV (GPS) RWY 13

SHEBOYGAN COUNTY MEML INTL (SBM)

RNP APCH - GPS.	MISSED APPROACH: Climbing right turn to 3000 direct ORMEE and hold.
Rwy 13 helicopter visibility reduction below 3/4 SM NA.	

ASOS <b>118.425</b>	MILWAUKEE APP CON <b>127.375 263.075</b>	GCO <b>121.725</b>	UNICOM <b>122.7 (CTAF) 1</b>
------------------------	---	-----------------------	---------------------------------

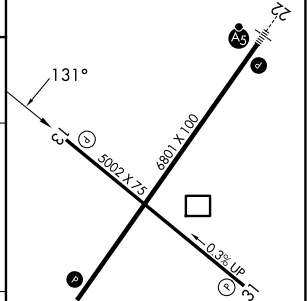
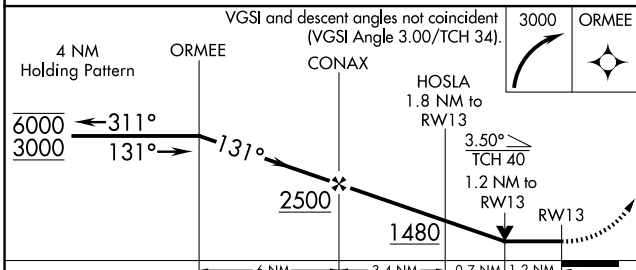


EC-3, 14 MAY 2026 to 11 JUN 2026

EC-3, 14 MAY 2026 to 11 JUN 2026

ELEV <b>755</b>	TDZE <b>755</b>
-----------------	-----------------

- REIL Rwy 4
- MIRL Rwy 13-31
- HIRL Rwy 4-22



CATEGORY	A	B	C	D
LNVA MDA	1160-1	405 (500-1)	1160-1 1/8	405 (500-1 1/8)
CIRCLING	1200-1 445 (500-1)	1240-1 485 (500-1)	1340-1 1/2 585 (600-1 1/2)	1360-2 605 (700-2)