

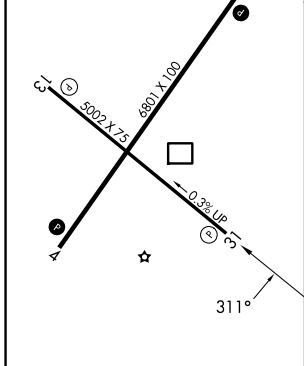
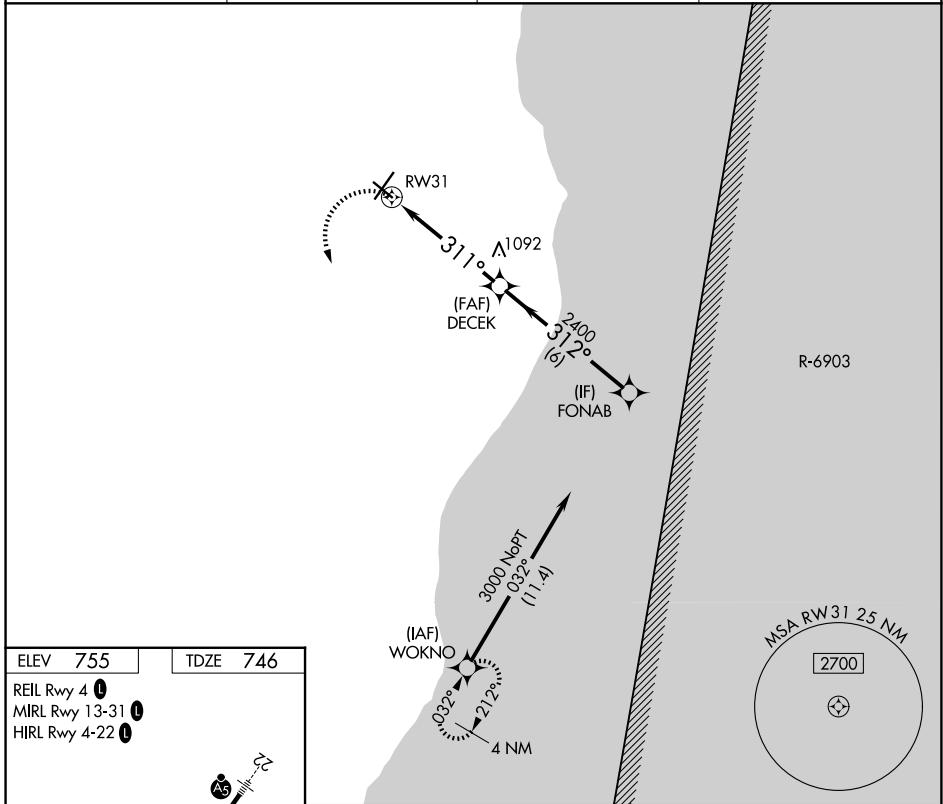
APP CRS 311°	Rwy Ldg 5002
	TDZE 746
	Apt Elev 755

RNAV (GPS) RWY 31

SHEBOYGAN COUNTY MEML INTL (SBM)

RNP APCH - GPS.	MISSED APPROACH: Climbing left turn to 3000 direct WOKNO and hold.
<p>Rwy 31 helicopter visibility reduction below 3/4 SM NA.</p>	

ASOS 118.425	MILWAUKEE APP CON 127.375 263.075	GCO 121.725	UNICOM 122.7 (CTAF) 0
------------------------	---	-----------------------	---------------------------------



3000 WOKNO	DECEK		FONAB	
1.5 NM to RW31	2400	3000		
311°	312°			
1.5	3.5 NM	6 NM		
CATEGORY	A	B	C	D
LNAV MDA	1260-1	514 (600-1)	1260-1 3/8	514 (600-1 3/8)
CIRCLING	1260-1	505 (600-1)	1340-1 1/2	1360-2
			585 (600-1 1/2)	605 (700-2)

EC-3, 14 MAY 2026 to 11 JUN 2026

EC-3, 14 MAY 2026 to 11 JUN 2026