

WAAS CH 61104 W04A	APP CRS 037°	Rwy Ldg TDZE Apt Elev	6801 744 755
--	------------------------	-----------------------------	---

RNAV (GPS) RWY 4

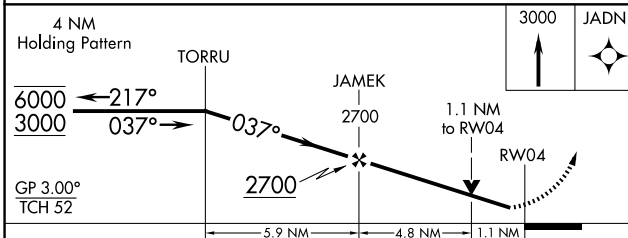
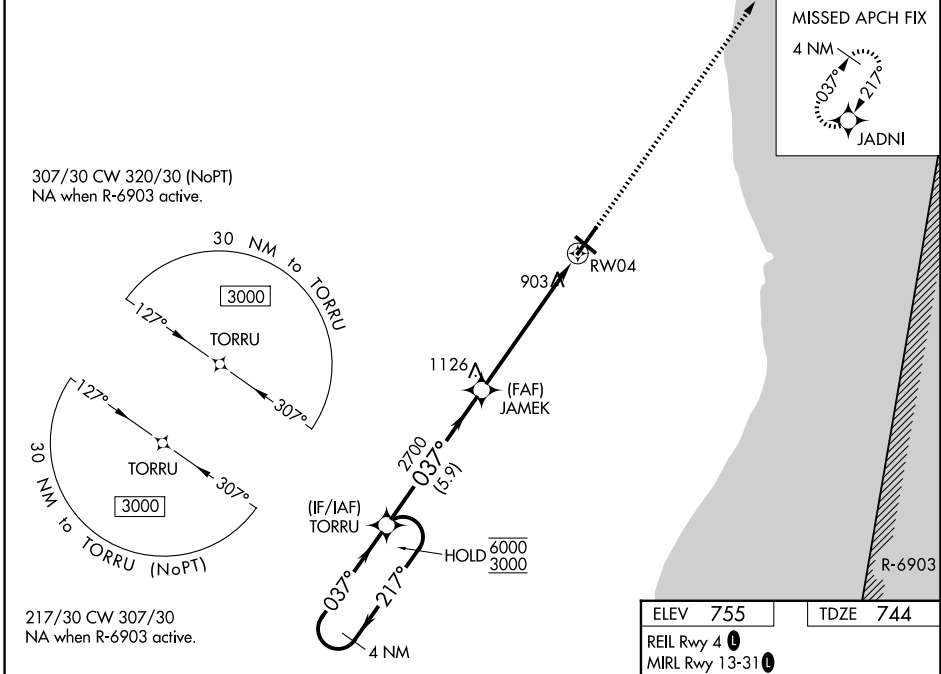
SHEBOYGAN COUNTY MEML INTL (SBM)

RNP APCH - GPS.

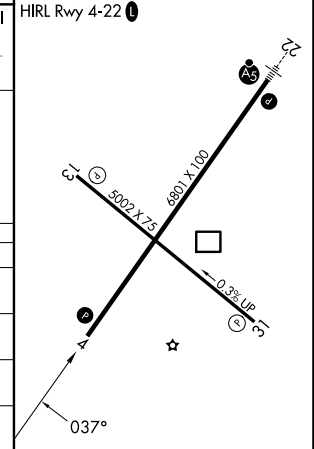
⚠ Rwy 4 helicopter visibility reduction below 3/4 SM NA. For uncompensated Baro-VNAV systems, LNAV/VNAV NA below -19°C or above 54°C.

MISSED APPROACH: Climb to 3000 direct JADNI and hold.

ASOS 118.425	MILWAUKEE APP CON 127.375 263.075	GCO 121.725	UNICOM 122.7 (CTAF) 0
------------------------	---	-----------------------	---------------------------------



CATEGORY	A	B	C	D
LPV DA		994-1	250 (300-1)	
LNAV/VNAV DA		1193-1 3/8	449 (500-1 3/8)	
LNAV MDA	1160-1	416 (500-1)	1160-1 1/8	416 (500-1 1/8)
CIRCLING	1200-1 445 (500-1)	1240-1 485 (500-1)	1340-1 1/2 585 (600-1 1/2)	1360-2 605 (700-2)



EC-3, 14 MAY 2026 to 11 JUN 2026

EC-3, 14 MAY 2026 to 11 JUN 2026