

WAAS CH 65920 W13A	APP CRS 128°	Rwy Ldg TDZE 1182 Apt Elev 1183
--	------------------------	---

RNAV (GPS) RWY 13

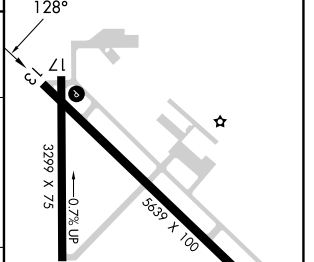
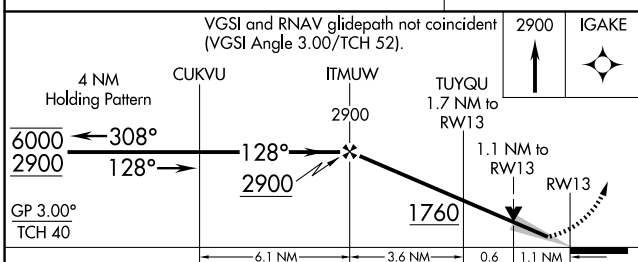
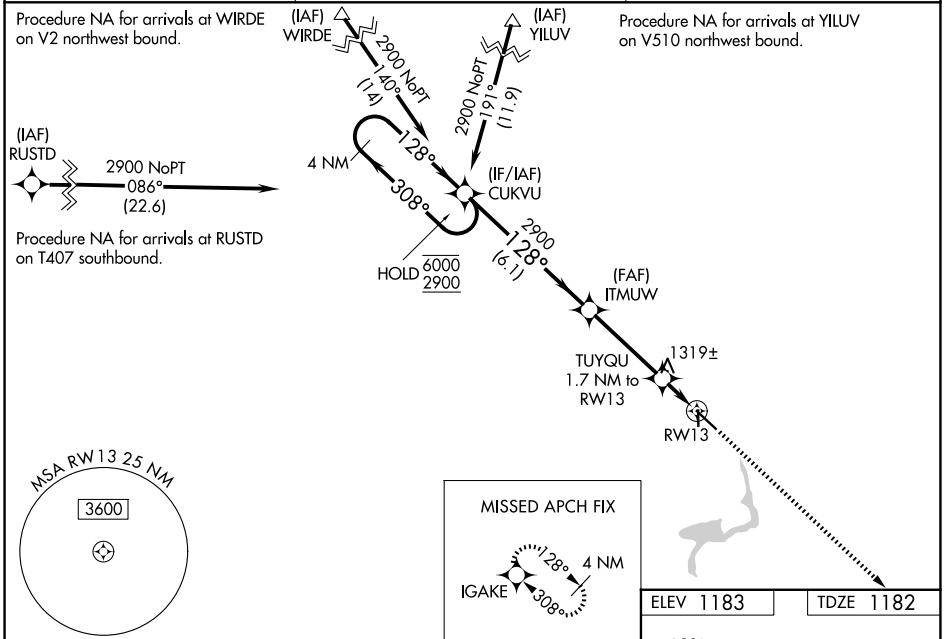
FERGUS FALLS RGNL (FFM)

RNP APCH - GPS.

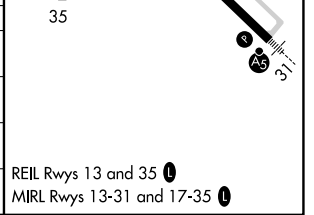
⚠ For uncompensated Baro-VNAV systems, LNAV/VNAV NA below -17°C or above 54°C. When local altimeter setting not received, use Elbow Lake altimeter setting and increase LPV DA to 1428 feet, increase LNAV/VNAV DA to 1516 feet and all visibilities 1/8 SM; increase all MDAs 60 feet and LNAV Cat C/D and Circling Cat C/D visibility 1/4 SM. Baro-VNAV and VDP NA when using Elbow Lake altimeter setting.

MISSED APPROACH:
Climb to 2900 direct IGAKE and hold.

AWOS-3PT 119.05	MINNEAPOLIS CENTER 126.1 269.2	UNICOM 122.8 (CTAF) 0
---------------------------	--	---------------------------------



CATEGORY	A	B	C	D
LPV DA		1382-3/4	200 (200-3/4)	
LNAV/VNAV DA		1470-7/8	288 (300-7/8)	
LNAV MDA	1580-1	398 (400-1)	1580-1/8	398 (400-1/8)
CIRCLING	1640-1 457 (500-1)	1740-1 557 (600-1)	1820-1 3/4 637 (700-1 3/4)	1940-2 1/2 757 (800-2 1/2)



NC-1, 14 MAY 2026 to 11 JUN 2026

NC-1, 14 MAY 2026 to 11 JUN 2026