

LOC I-GCN 108.9	APP CRS 030°	Rwy Ldg 8999
		TDZE 6556
		Apt Elev 6609

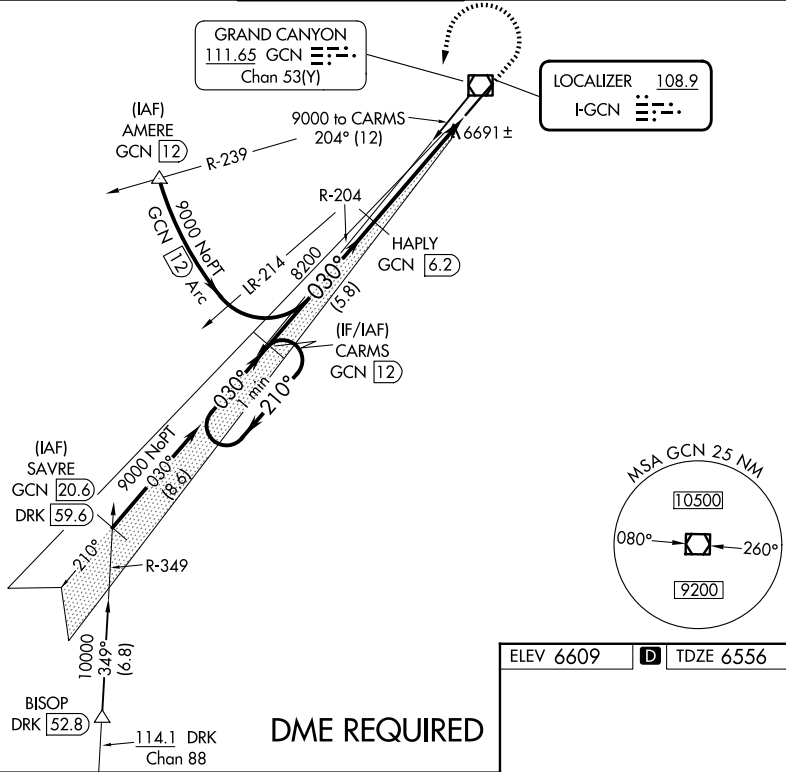
ILS or LOC RWY 3

GRAND CANYON NTL PARK (GCN)

⚠ DME from GCN VOR/DME. Simultaneous reception of I-GCN and GCN DME required. DME required.

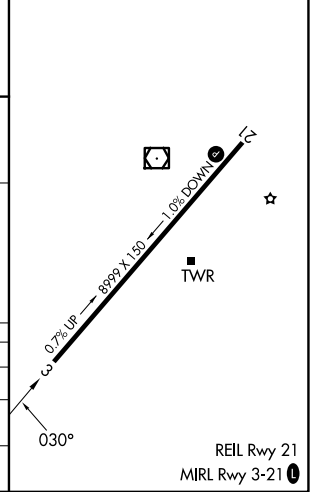
MISSED APPROACH: Climb to 7000 then climbing left turn to 9000 on heading 180° and on GCN VOR/DME R-204 direct CARMS/GCN 12 DME and hold.

ATIS 124.3	LOS ANGELES CENTER 124.85 319.2	CANYON TOWER* 119.0 (CTAF) 0	GND CON 121.9	UNICOM 122.95
----------------------	---	--	-------------------------	-------------------------



ELEV 6609	D TDZE 6556
-----------	--------------------

One Minute Holding Pattern	CARMS GCN 12	HAPLY GCN 6.2	7000	9000	GCN R-204	CARMS GCN 12
	9000	8200	hdg 180°	* GCN 2.3	* LOC only.	GCN 1.2
GS 3.00° TCH 58	210°	030°	030°	180°		
	5.8 NM	3.9 NM	1.2 NM			
CATEGORY	A	B	C	D		
S-ILS 3		6795-¾	239 (200-¾)			
S-LOC 3	6960-1	404 (400-1)	6960-1⅛	404 (400-1⅛)		
CIRCLING	7140-1 531 (600-1)	7200-1 591 (600-1)	7280-2 671 (700-2)	7620-3 1011 (1100-3)		



SW-4, 14 MAY 2026 to 11 JUN 2026

SW-4, 14 MAY 2026 to 11 JUN 2026