

WAAS CH 86340 W03A	APP CRS 030°	Rwy Ldg TDZE Apt Elev	8999 6556 6609
--	------------------------	-----------------------------	---

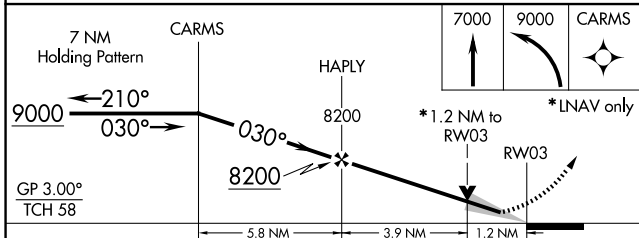
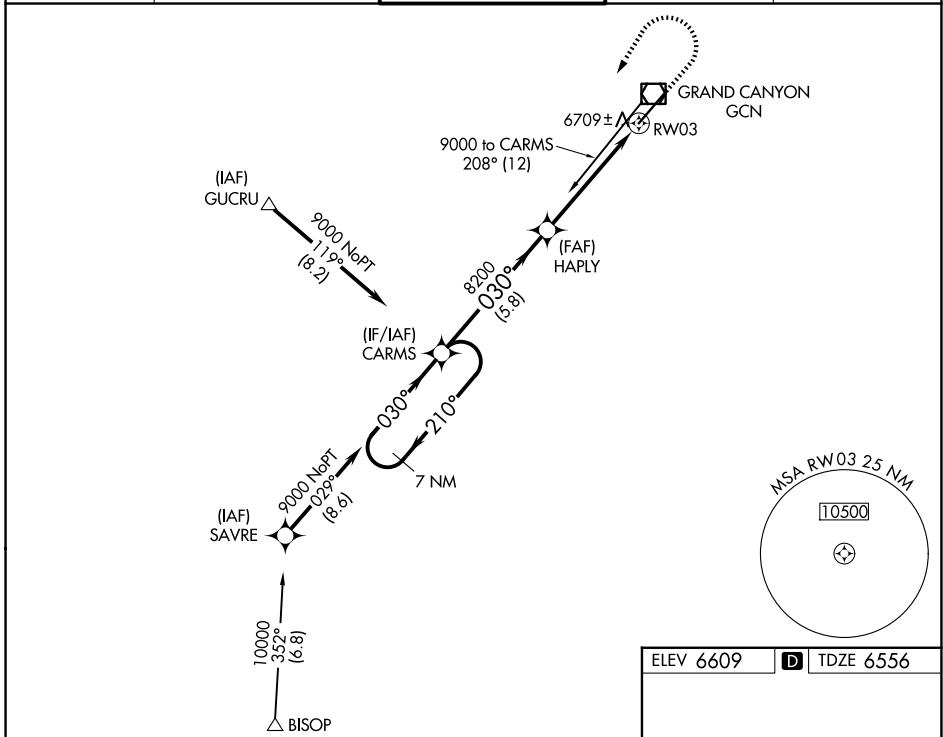
RNAV (GPS) RWY 3

GRAND CANYON NTL PARK (GCN)

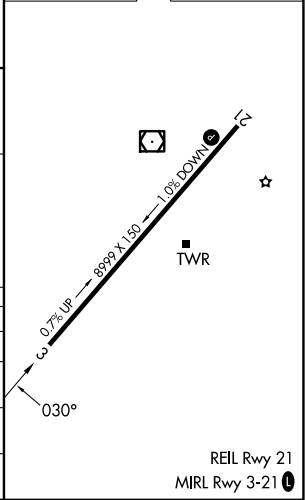
▽ For uncompensated Baro-VNAV systems, LNAV/VNAV NA
▲ below -12°C (11°F) or above 44°C (111°F).
 DME/DME RNP-0.3 NA.

MISSED APPROACH: Climb to 7000 then climbing left turn to 9000 direct CARMS and hold.

ATIS 124.3	LOS ANGELES CENTER 124.85 319.2	CANYON TOWER* 119.0 (CTAF) 0	GND CON 121.9	UNICOM 122.95
----------------------	---	--	-------------------------	-------------------------



ELEV 6609	D TDZE 6556
-----------	--------------------



CATEGORY	A	B	C	D
LPV DA		6797-3/4	241 (200-3/4)	
LNAV/VNAV DA		6981-1 1/2	425 (400-1 1/2)	
LNAV MDA	6960-1	404 (400-1)	6960-1 1/8	404 (400-1 1/8)
CIRCLING	7140-1 1/4 531 (600-1 1/4)	7200-1 1/2 591 (600-1 1/2)	7280-3 671 (700-3)	7620-3 1011 (1100-3)