

WAAS CH 82021 W25A	APP CRS 249°	Rwy Ldg TDZE Apt Elev	6001 1039 1062
--	------------------------	-----------------------------	---

RNAV (GPS) RWY 25

GWINNETT COUNTY/BRISCOE FLD (LZU)

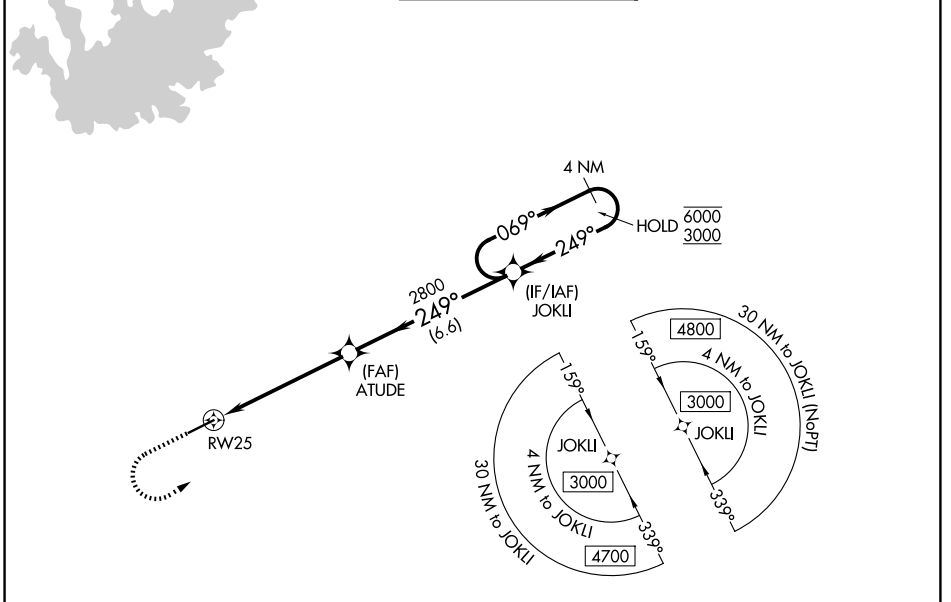
RNP APCH - GPS.

⚠ For uncompensated Baro-VNAV systems, LNAV/VNAV NA below -17°C or above 54°C.
 ⚠ Circling Rwy 7 NA at night. Rwy 25 helicopter visibility reduction below 3/4 SM NA. For inop ALS, increase LNAV/VNAV all Cats visibility to 1 3/8 SM, LNAV Cat A/B visibility to 1 SM and LNAV Cat C/D visibility to 1 3/8 SM.

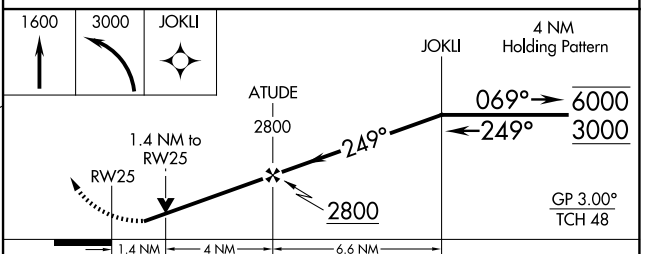
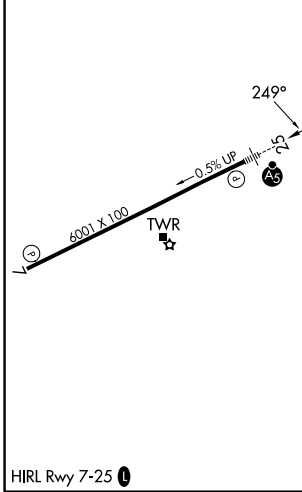
MALSRL

MISSED APPROACH: Climb to 1600 then climbing left turn to 3000 direct JOKLI and hold.

ATIS 132.275	ATLANTA APP CON 126.975 239.275	GWINNETT TOWER★ 124.1 (CTAF) 0	GND CON 121.8	UNICOM 123.05
------------------------	---	--	-------------------------	-------------------------



ELEV 1062	TDZE 1039
-----------	-----------



CATEGORY	A	B	C	D
LPV DA	1393-3/4		354 (400-3/4)	
LNAV/VNAV DA	1516-1		477 (500-1)	
LNAV MDA	1520-3/4	481 (500-3/4)	1520-1	481 (500-1)
CIRCLING	1640-1	578 (600-1)	1780-2 718 (800-2)	1780-2 1/4 718 (800-2 1/4)

SE-4, 14 MAY 2026 to 11 JUN 2026

SE-4, 14 MAY 2026 to 11 JUN 2026