

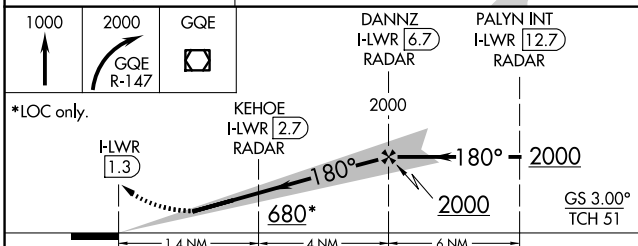
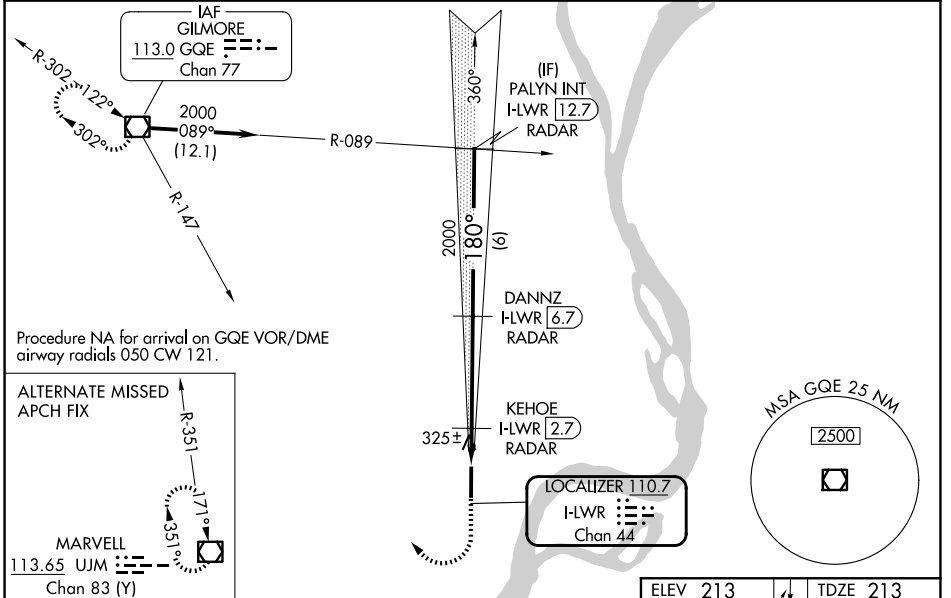
LOC/DME I-LWR <b>110.7</b> Chan <b>44</b>	APP CRS <b>180°</b>	Rwy Ldg <b>6003</b> TDZE <b>213</b> Apt Elev <b>213</b>
---	------------------------	---

# ILS or LOC RWY 17

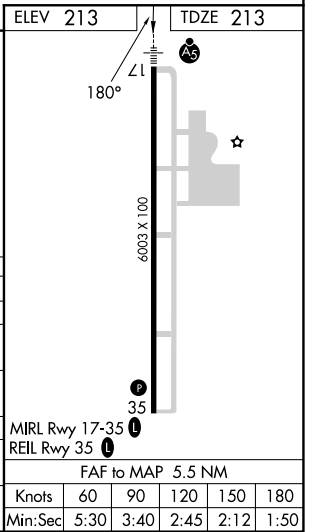
WEST MEMPHIS MUNI (A W M)

DME or RADAR required.	MALSR	MISSED APPROACH: Climb to 1000 then climbing right turn to 2000 on GQE VOR/DME R-147 to GQE VOR/DME and hold.
NA For inop ALS, increase S-LOC 17 Cat C/D visibility to 1 3/8 SM and KEHOE FIX MINIMUMS S-LOC 17 Cats C/D visibility to 1 SM.		

ASOS <b>118.175</b>	MEMPHIS APP CON <b>119.1 291.6</b>	CLNC DEL <b>121.7</b>	UNICOM <b>123.05</b> (CTAF)
------------------------	---------------------------------------	--------------------------	--------------------------------



CATEGORY	A	B	C	D
S-ILS 17	413-1/2 200 (200-1/2)			
S-LOC 17	680-1/2	467 (500-1/2)	680-1	467 (500-1)
CIRCLING	680-1 467 (500-1)	740-1 527 (600-1)	800-1 1/2 587 (600-1 1/2)	920-2 1/4 707 (800-2 1/4)
KEHOE FIX MINIMUMS				
S-LOC 17	580-1/2	367 (400-1/2)	580-5/8	367 (400-5/8)
CIRCLING	640-1 427 (500-1)	740-1 527 (600-1)	800-1 1/2 587 (600-1 1/2)	920-2 1/4 707 (800-2 1/4)



SC-1, 14 MAY 2026 to 11 JUN 2026

SC-1, 14 MAY 2026 to 11 JUN 2026

MIRL Rwy 17-35	REIL Rwy 35
FAF to MAP 5.5 NM	
Knots	60 90 120 150 180
Min:Sec	5:30 3:40 2:45 2:12 1:50