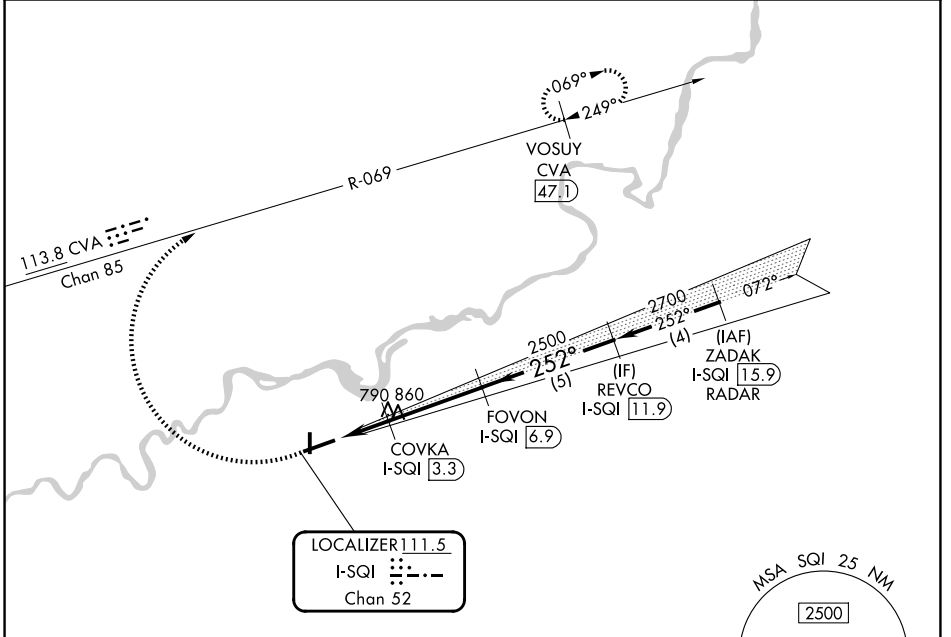


LOC/DME I-SQI <b>111.5</b> Chan 52	APP CRS <b>252°</b>	Rwy Ldg TDZE Apt Elev <b>6499</b> <b>647</b> <b>648</b>
--	------------------------	--

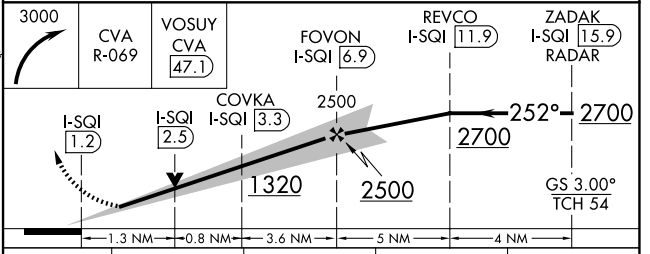
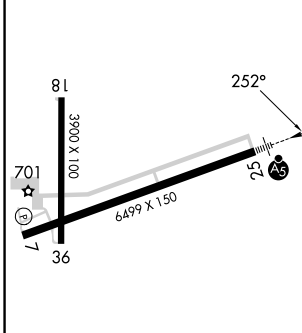
# ILS or LOC RWY 25

WHITESIDE COUNTY/JOS H BITTORF FLD (SQI)

DME required. Radar required for procedure entry.		MALSR	MISSED APPROACH: Climbing right turn to 3000 on CVA VORTAC R-069 to VOSUY/CVA 47.1 DME and hold.	
AWOS-3PT <b>119.175</b>	ROCKFORD APP CON <b>126.0 327.0</b>	CLNC DEL <b>128.0</b>	UNICOM <b>123.0 (CTAF) 0</b>	



ELEV 648	TDZE 647
----------	----------



	HIRL Rwy 7-25 0				
	MIRL Rwy 18-36 0				
	REIL Rwy 7, 18 and 36 0				
FAF to MAP 5.7 NM					
Knots	60	90	120	150	180
Min:Sec	5:42	3:48	2:51	2:17	1:54
CATEGORY	A	B	C	D	
S-ILS 25	847-1/2 200 (200-1/2)				
S-LOC 25	1100-1/2 453 (500-1/2)		1100-7/8 453 (500-7/8)		
CIRCLING	1140-1 492 (500-1)		1160-1 1/2 512 (600-1 1/2)		1480-2 3/4 832 (900-2 3/4)

EC-3, 14 MAY 2026 to 11 JUN 2026

EC-3, 14 MAY 2026 to 11 JUN 2026