

APP CRS	Rwy Ldg	6499
072°	TDZE	648
	Apt Elev	648

RNAV (GPS) RWY 7

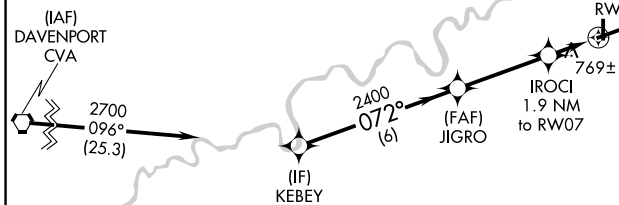
WHITESIDE COUNTY/JOS H BITTORF FLD (SQI)

RNP APCH -GPS.		MISSED APPROACH: Climb to 2700 direct HELEG and hold.	
Rwy 7 helicopter visibility reduction below 3/4 SM NA.			

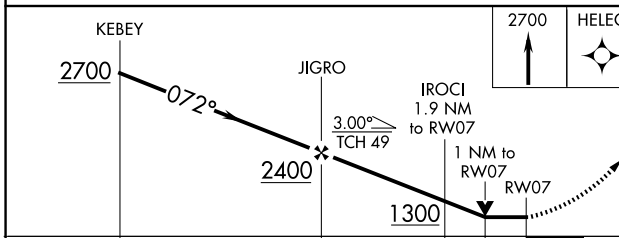
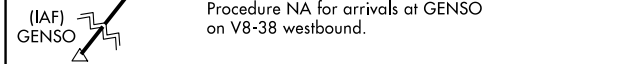
AWOS-3PT 119.175	ROCKFORD APP CON 126.0 327.0	CLNC DEL 128.0	UNICOM 123.0 (CTAF) 0
----------------------------	--	--------------------------	---------------------------------



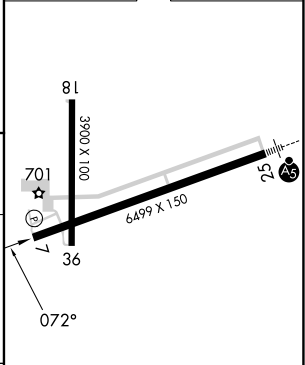
Procedure NA for arrival on CVA VORTAC airway radial 083 westbound.



Procedure NA for arrivals at GENSO on V8-38 westbound.



ELEV 648	TDZE 648
----------	----------



CATEGORY	A	B	C	D
LNVA MDA	1020-1 372 (400-1)			
CIRCLING	1140-1 492 (500-1)	1160-1½ 512 (600-1½)	1480-2¾ 832 (900-2¾)	

HIRL Rwy 7-25
MIRL Rwy 18-36
REIL Rws 7, 18 and 36

EC-3, 14 MAY 2026 to 11 JUN 2026

EC-3, 14 MAY 2026 to 11 JUN 2026