

WAAS CH <b>77633</b> <b>W35A</b>	APP CRS <b>353°</b>	Rwy Ldg TDZE Apt Elev	<b>5701</b> <b>2918</b> <b>2918</b>
--	------------------------	-----------------------------	---

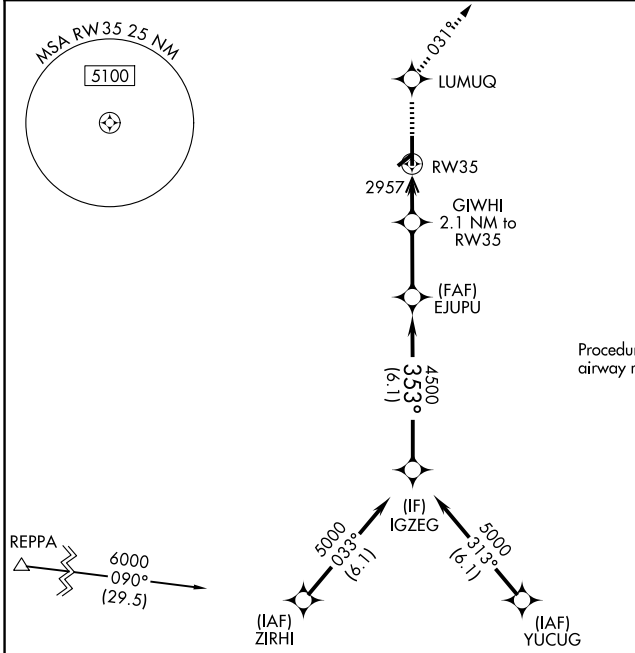
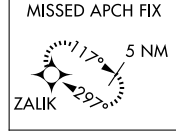
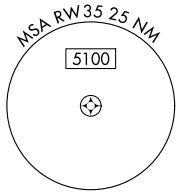
# RNAV (GPS) RWY 35

PERRYTON OCHILTREE COUNTY (PYX)

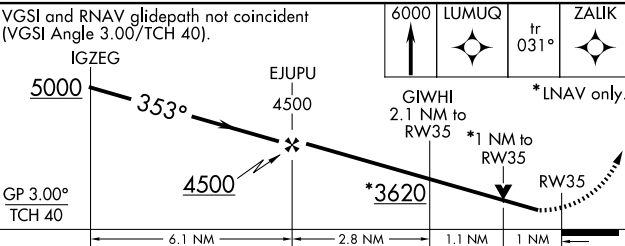
**▼** Baro-VNAV and VDP NA when using Gage altimeter setting. For uncompensated Baro-VNAV systems, LNAV/VNAV NA below -20°C (-4°F) or above 54°C (130°F).  
**▲** When local altimeter setting not received, use Gage altimeter setting and increase all DAs 208 feet and MDA 220 feet; increase LPV and LNAV/VNAV Cats A and B visibility ¼ miles and Circling Cat B visibility ¼ mile. DME/DME RNP -0.3 NA. Helicopter visibility reduction below ¼ SM NA. Circling NA to Rws 4 and 22.

**MISSED APPROACH:** Climb to 6000 direct LUMUQ and on track 031° to ZALIK and hold.

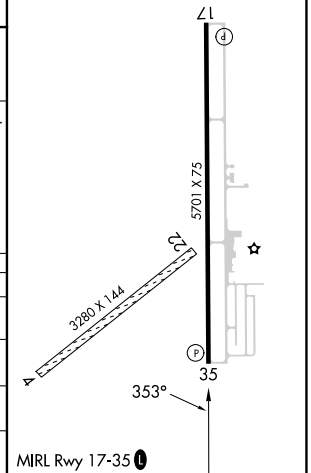
AWOS-3 <b>118.175</b>	KANSAS CITY CENTER <b>126.95 379.2</b>	UNICOM <b>122.8 (CTAF) 0</b>
--------------------------	---	---------------------------------



ELEV 2918	TDZE 2918
-----------	-----------



CATEGORY	A	B	C	D
LPV DA	3168-7/8	250 (300-7/8)		NA
LNAV/VNAV DA	3168-7/8	250 (300-7/8)		NA
LNAV MDA	3320-1	402 (500-1)		NA
CIRCLING	3320-1 402 (500-1)	3580-1 662 (700-1)		NA



SC-2, 14 MAY 2026 to 11 JUN 2026

SC-2, 14 MAY 2026 to 11 JUN 2026