

| | | | |
|--|------------------------|-----------------------------|---|
| WAAS CH 86309 W06A | APP CRS 057° | Rwy Ldg TDZE Apt Elev | 4199 1763 1763 |
|--|------------------------|-----------------------------|---|

RNAV (GPS) RWY 6

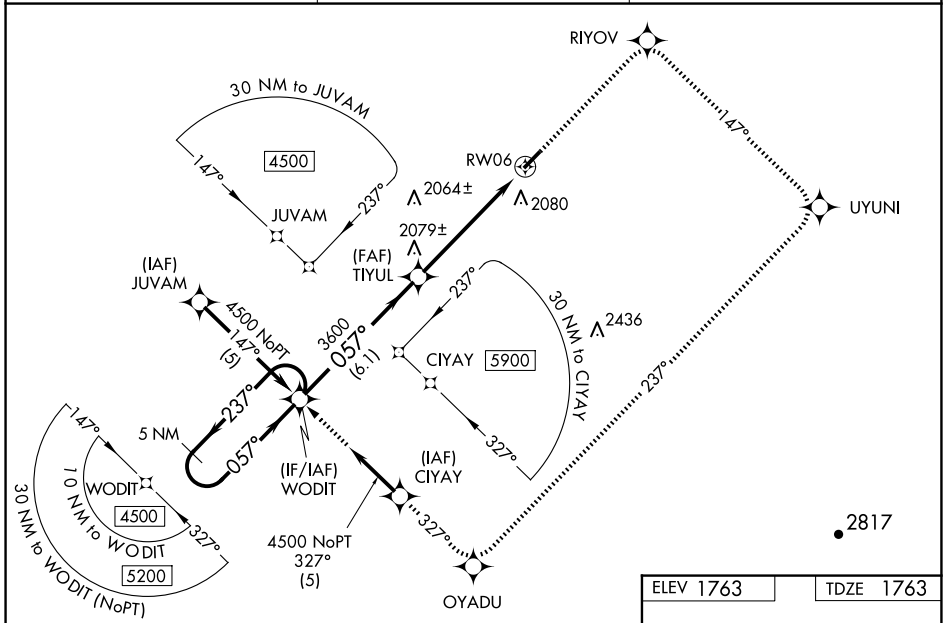
ALBERT S NADER RGNL (N66)

RNP APCH - GPS.

NA When local altimeter setting not received, use Binghamton altimeter setting: increase LPV DA to 2197 feet, LNAV/VNAV DA to 2473 feet, and all MDAs 140 feet; increase LPV and LNAV/VNAV visibilities all Cats ½ SM. Baro-VNAV NA when using Binghamton altimeter setting. For uncompensated Baro-VNAV systems, LNAV/VNAV NA below -18°C or above 54°C. Rwy 6 helicopter visibility reduction below 1 SM NA. Procedure NA at night.

MISSED APPROACH: Climb to 4500 direct RIYOV and right turn on track 147° to UYUNI and right turn on track 237° to OYADU and on track 327° to WODIT and hold.

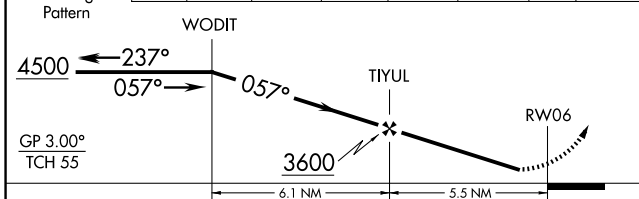
| | | |
|--------------------------|--------------------------------------|---------------------------------|
| AWOS-3 119.575 | BOSTON CENTER 133.25 279.5 | UNICOM 122.8 (CTAF) 0 |
|--------------------------|--------------------------------------|---------------------------------|



NE-2, 14 MAY 2026 to 11 JUN 2026

NE-2, 14 MAY 2026 to 11 JUN 2026

| | | | | | | |
|----------------------|------|-------|-------|-------|---------|-------|
| 5 NM Holding Pattern | 4500 | RIYOV | UYUNI | OYADU | tr 327° | WODIT |
|----------------------|------|-------|-------|-------|---------|-------|



| CATEGORY | A | B | C | D |
|--------------|--------|-------------|---|----|
| LPV DA | 2075-1 | 312 (400-1) | | NA |
| LNAV/VNAV DA | 2351-2 | 588 (600-2) | | NA |
| LNAV MDA | 2260-1 | 497 (500-1) | | NA |
| CIRCLING | 2380-1 | 617 (700-1) | | NA |

| | |
|-----------|-----------|
| ELEV 1763 | TDZE 1763 |
|-----------|-----------|

Diagram showing the runway and taxiway layout. RWY 6 and RWY 24 are parallel. Taxiway A199 X75 is located between them. The runway has a 0.5% upward slope. The angle between the runway and the taxiway is 0.57°.

MIRL Rwy 6-24 0
REIL Rws 6 and 24 0