

LOM AK 362	APP CRS 351°	Rwy Ldg 3947
		TDZE 1129
		Apt Elev 1135

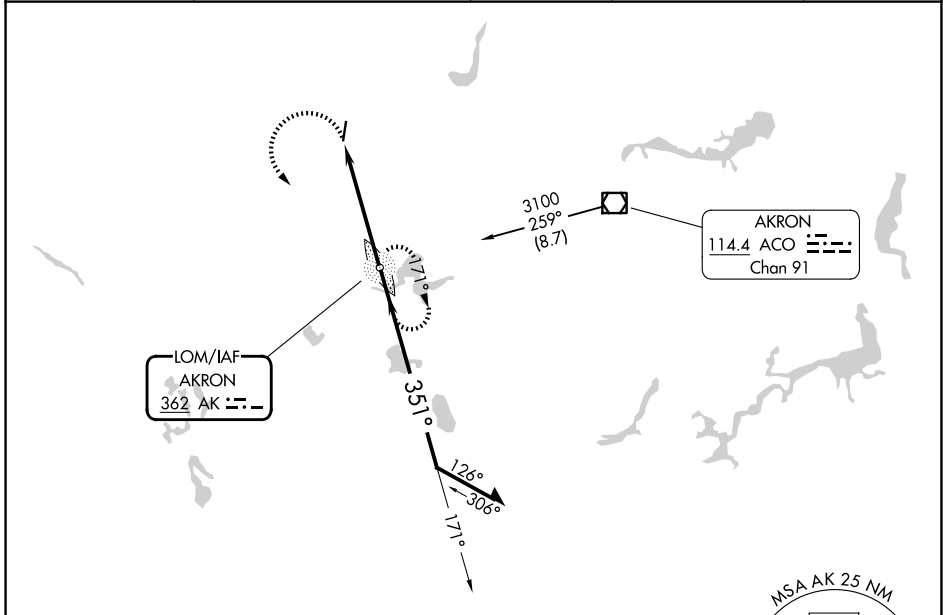
NDB RWY 2

KENT STATE UNIVERSITY (1G3)

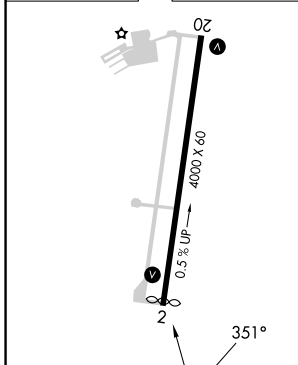
▼ Rwy 2 helicopter visibility reduction below 1 SM NA. When local altimeter setting not received, use AKR altimeter setting and increase all MDAs 40 feet, increase S-2 Cat C and Circling Cat C visibility ½ SM. Straight-in and Circling Rwy 2 NA at night.

▲ NA MISSED APPROACH: Climbing left turn to 3100 direct AKRON LOM and hold. Continue climb in hold to 3100.

AWOS-2 119.15	CLEVELAND APP CON * 125.5 371.875	CLNC DEL 125.65	UNICOM 122.725 (CTAF)	122.9 📶
-------------------------	---------------------------------------------	---------------------------	---------------------------------	-----------------------



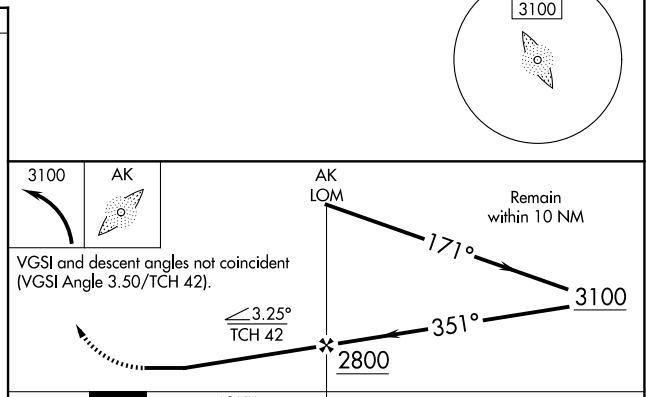
ELEV 1135	TDZE 1129
-----------	-----------



MIRL Rwy 2-20 **📶**
REIL Rwys 2 and 20 **📶**

FAF to MAP 4.8 NM

Knots	60	90	120	150	180
Min:Sec	4:48	3:12	2:24	1:55	1:36



CATEGORY	A	B	C	D
S-2	1760-1	631 (700-1)	1760-1¾ 631 (700-1¾)	NA
CIRCLING	1760-1	625 (700-1)	1760-1¾ 625 (700-1¾)	NA