

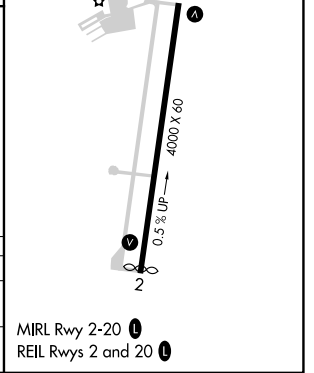
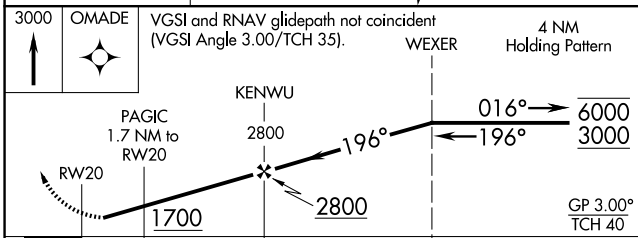
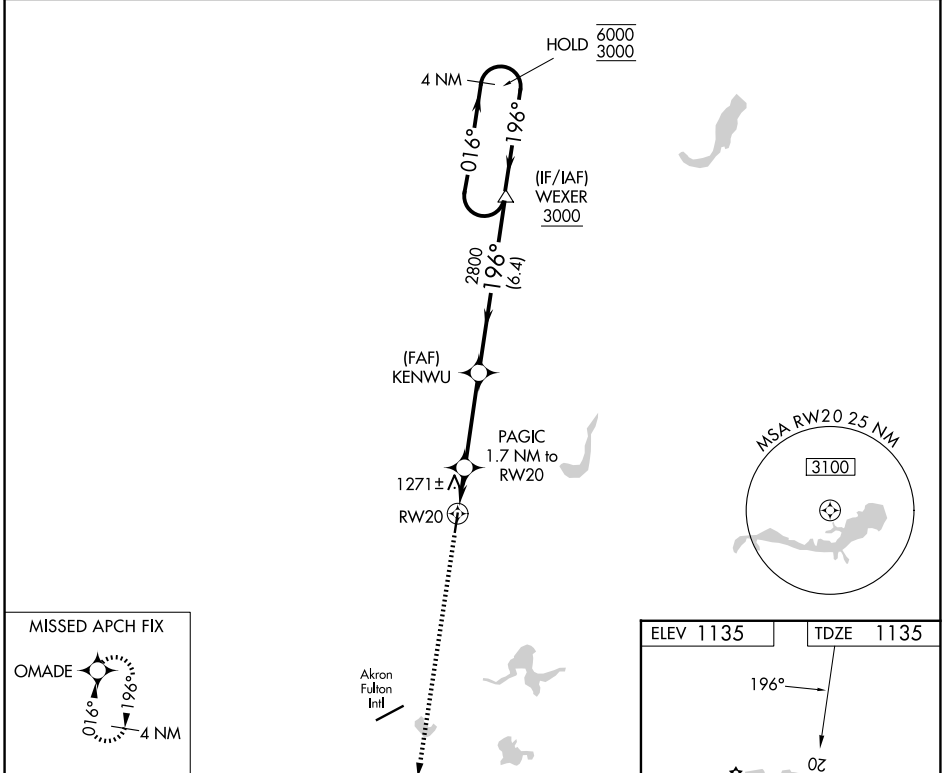
WAAS CH 65701 W20A	APP CRS 196°	Rwy Ldg TDZE 1135 Apt Elev 1135
--	------------------------	---

RNAV (GPS) RWY 20

KENT STATE UNIVERSITY (1G3)

RNP APCH - GPS.		MISSED APPROACH: Climb to 3000 direct OMADE and hold.	
NA	Rwy 20 helicopter visibility reduction below 3/4 SM NA. When local altimeter setting not received, use AKR altimeter setting and increase LPV DA to 1473 feet and all visibilities 1/8 SM. Increase all MDAs 40 feet.		

AWOS-2 119.15	CLEVELAND APP CON ★ 125.5 371.875	CLNC DEL 125.65	UNICOM 122.725 (CTAF)	122.9
-------------------------	---	---------------------------	---------------------------------	--------------



CATEGORY	A	B	C	D
LPV DA	1443-7/8		308 (400-7/8)	NA
LNAV MDA	1580-1 445 (500-1)		1580-1 3/8 445 (500-1 3/8)	NA