

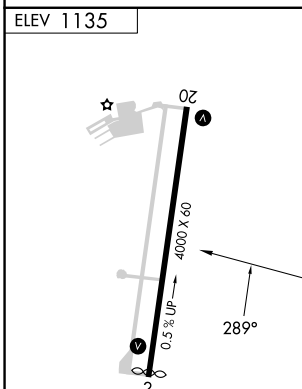
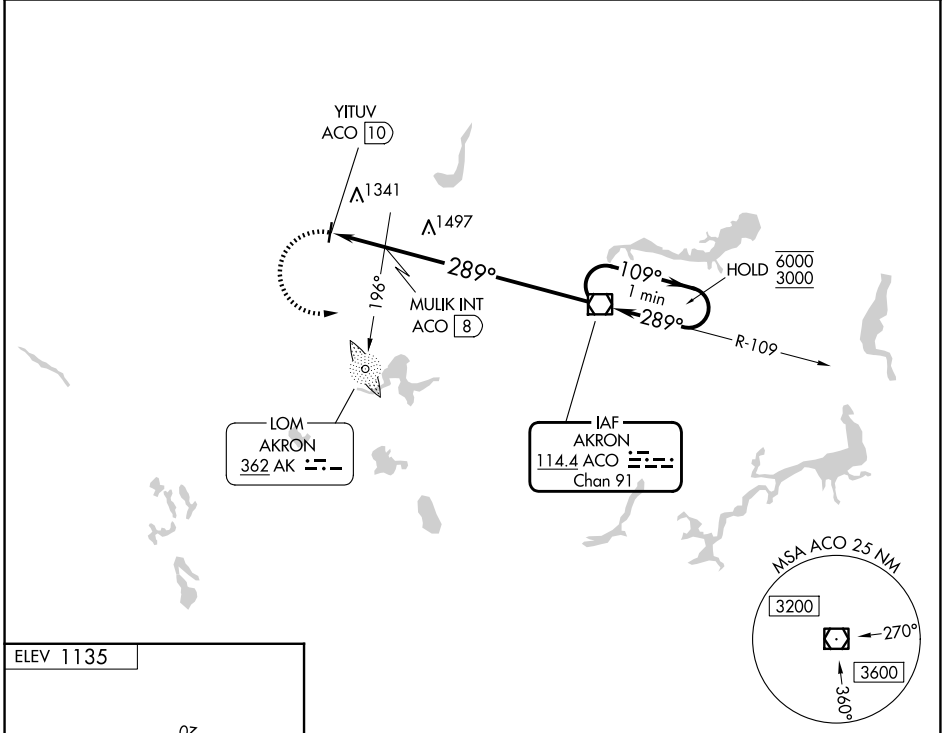
VOR/DME ACO <b>114.4</b> Chan <b>91</b>	APP CRS <b>289°</b>	Rwy Ldg TDZE N/A Apt Elev <b>1135</b>
---	------------------------	---

# VOR-A

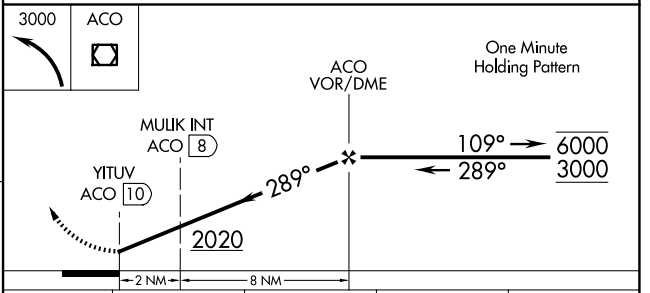
KENT STATE UNIVERSITY (1G3)

<p><b>⚠</b> Circling Rwy 2 NA at night. When local altimeter setting not received, use AKR altimeter setting and increase all MDAs 40 feet.</p> <p><b>⚠</b> NA</p>	<p>MISSED APPROACH: Climbing left turn to 3000 direct ACO VOR/DME and hold.</p>
--	---

AWOS-2 <b>119.15</b>	CLEVELAND APP CON ★ <b>125.5 371.875</b>	CLNC DEL <b>125.65</b>	UNICOM <b>122.725</b> (CTAF)	<b>122.9</b> <b>0</b>
-------------------------	---	---------------------------	---------------------------------	-----------------------



MIRL Rwy 2-20 <b>0</b>	REIL Rwys 2 and 20 <b>0</b>				
FAF to MAP 10 NM					
Knots	60	90	120	150	180
Min:Sec	10:00	6:40	5:00	4:00	3:20



CATEGORY	A	B	C	D
CIRCLING	2020-1¼	885 (900-1¼)	2020-2¾ 885 (900-2¾)	NA
MULIK FIX MINIMUMS (ADF OR DME REQUIRED)				
CIRCLING	1760-1	625 (700-1)	1760-1¾ 625 (700-1¾)	NA

# VOR-A